

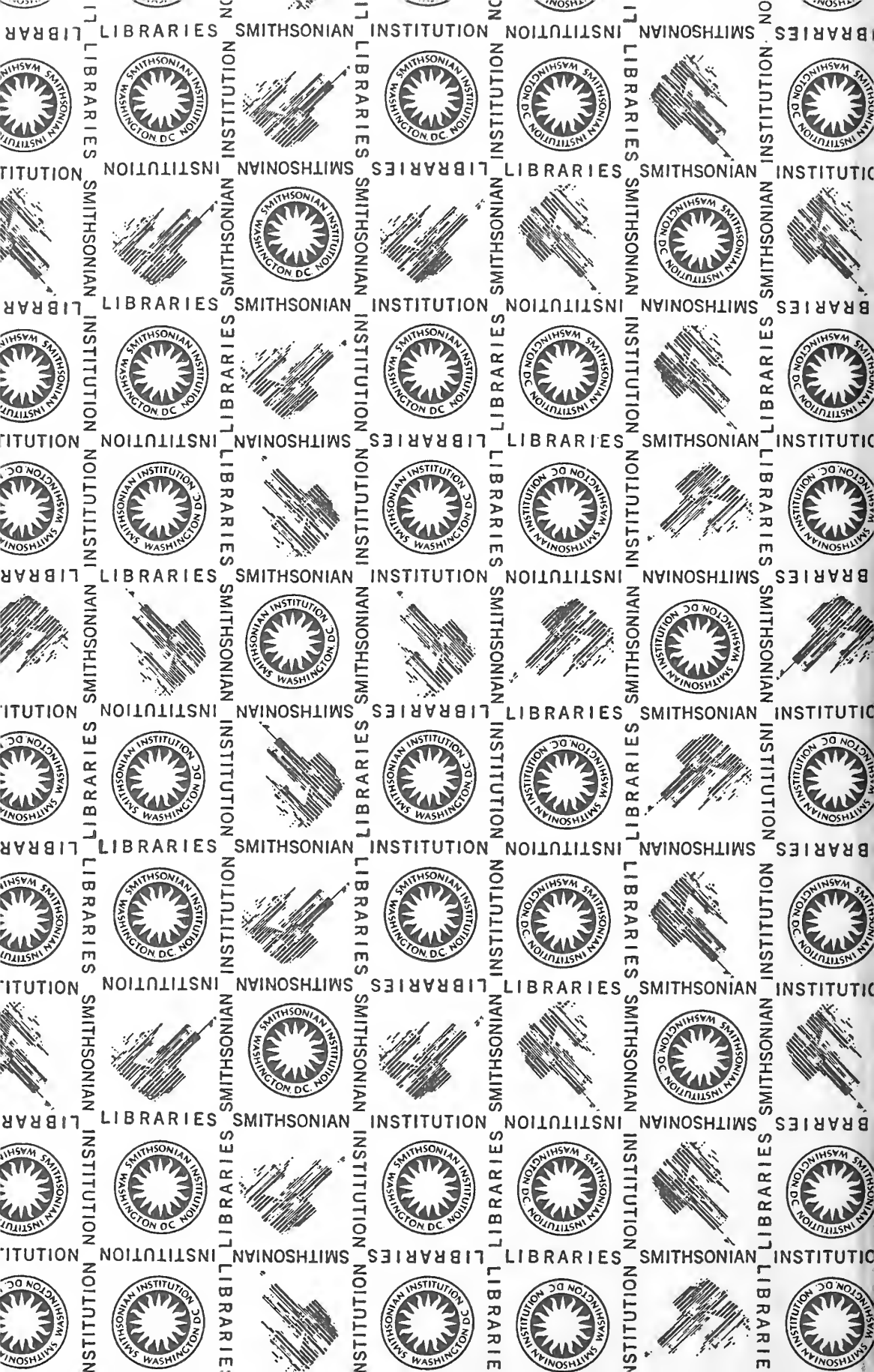
E
77.94
S84
1917

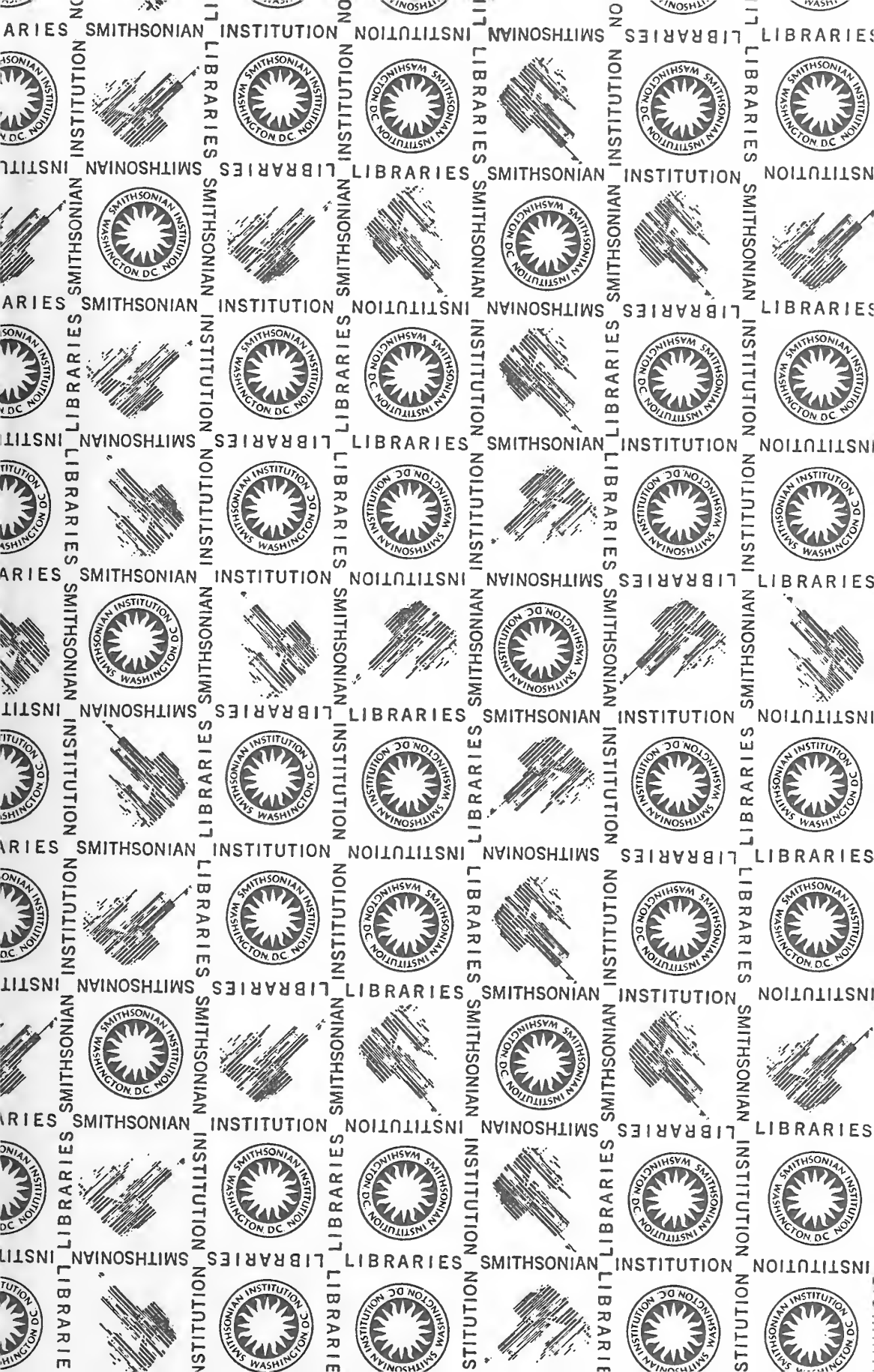
NMAI

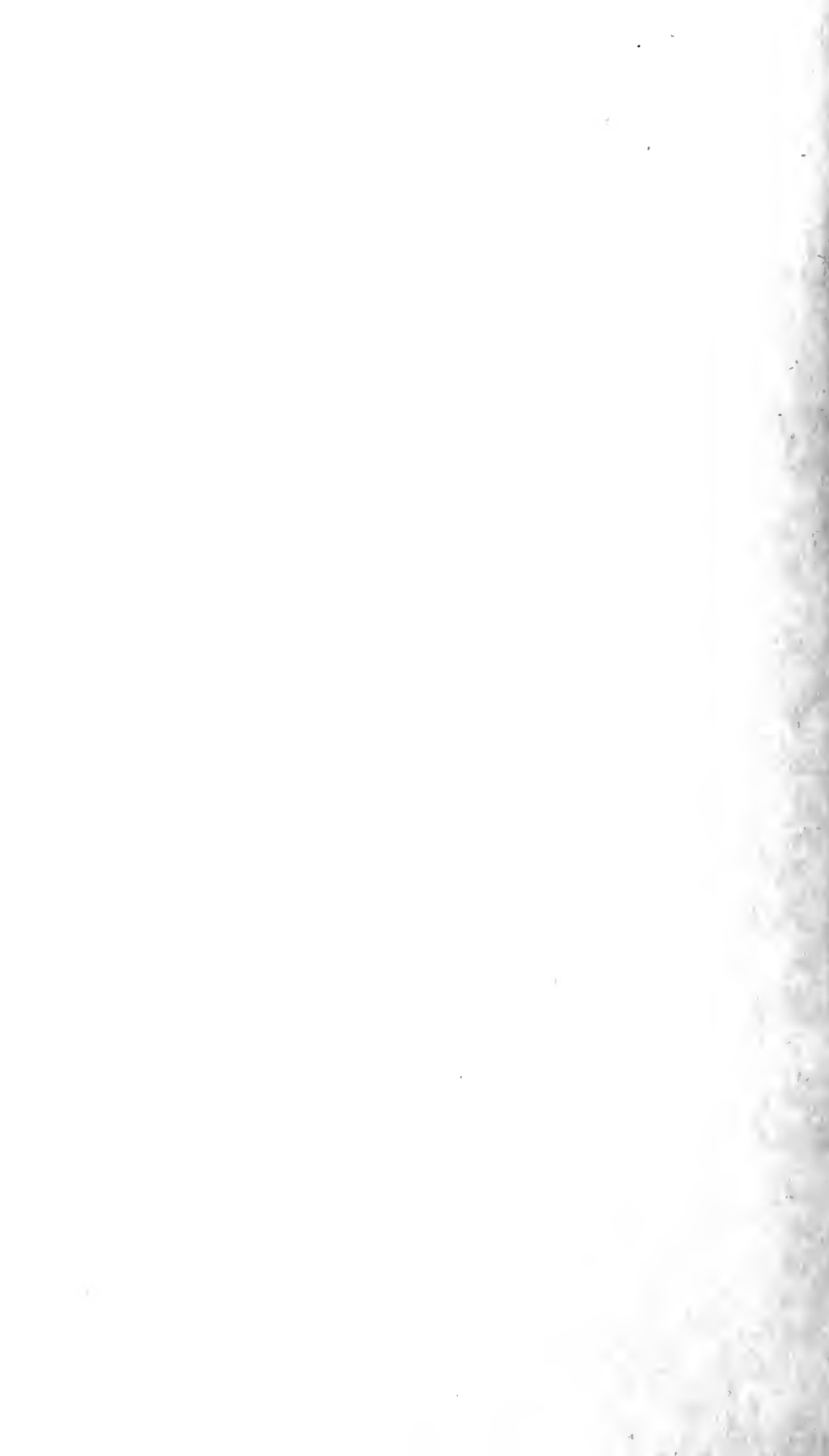
STEIGERWALT

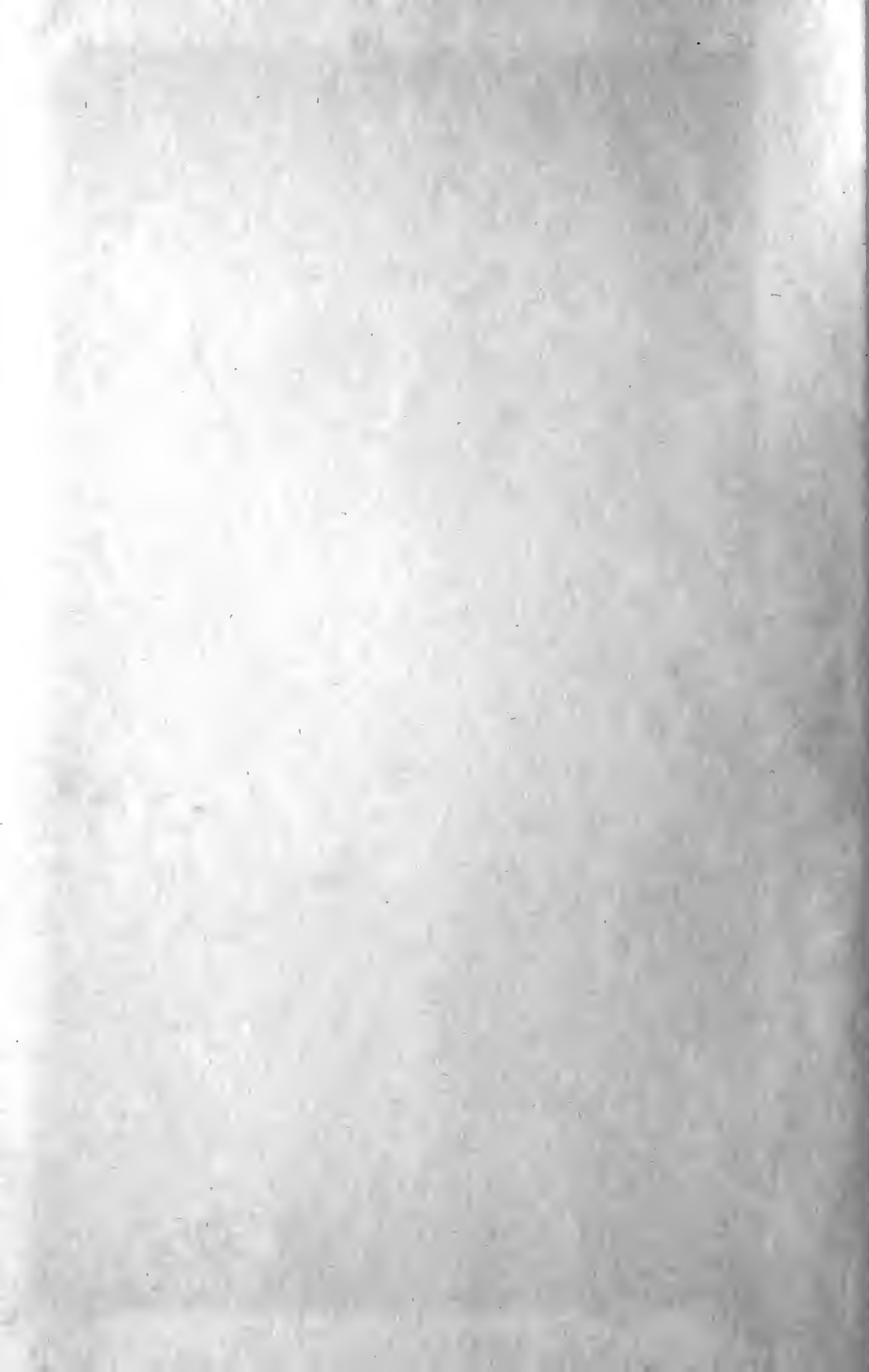
—

NORTH AMERICAN
INDIAN ANTIQUITIES



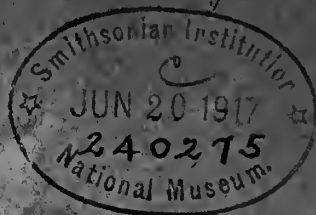






581

CATALOGUE No. 1197



COLLECTION OF
**North American
Indian Stone Implements**
Mound Builders and Early Aztec Pottery, &c.

BELONGING TO THE ESTATE OF

The Late CHARLES STEIGERWALT
OF LANCASTER, PA.

TO BE SOLD

Monday Afternoon, July 9th, at 2.30 o'clock, and
Tuesday Morning and Afternoon, July 10th, 1917
AT 10.30 A. M. AND 2.30 O'CLOCK P. M.

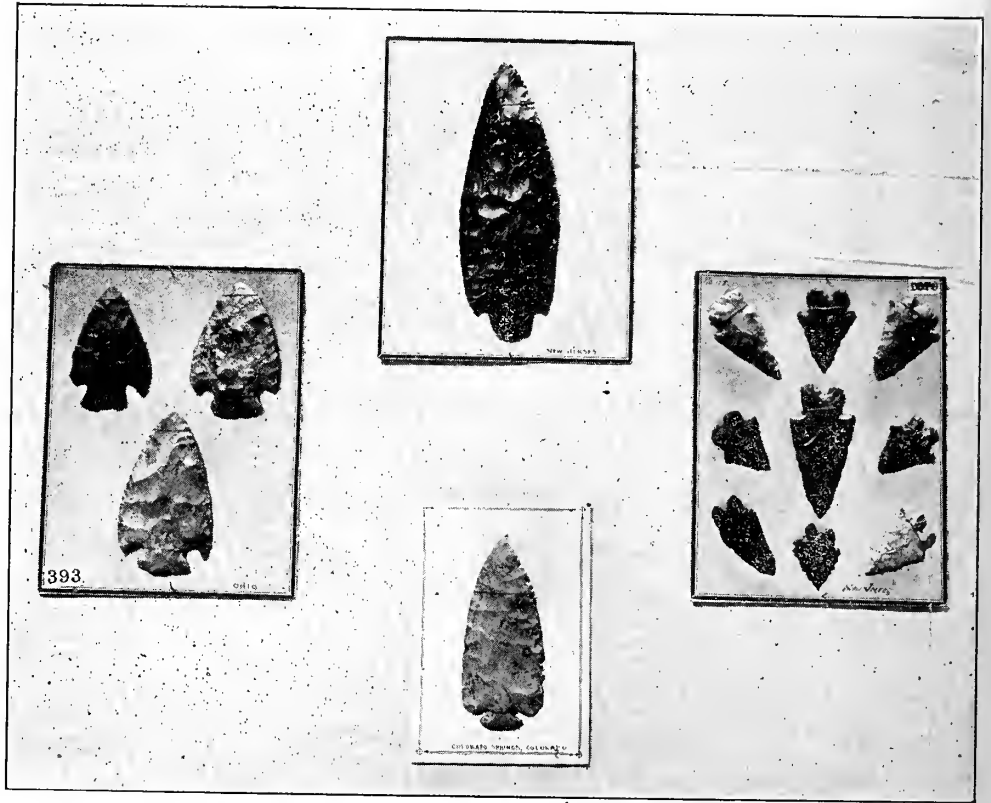
ORDER OF SALE:

First Sitting,	- - -	Lots 1 to 450
Second "	- - -	451 to 900
Third "	- - -	901 to end

STAN. V. HENKELS
AUCTION COMMISSION MERCHANT
1304 Walnut St., Philadelphia, Pa.







No. 393

No. 439
No. 455

No. 488

77.94
584
1917
NMAI

CATALOGUE No. 1197.



COLLECTION OF
**NORTH AMERICAN
INDIAN ANTIQUITIES**

BELONGING TO THE ESTATE OF THE LATE

CHARLES STEIGERWALT
OF LANCASTER, PA.

EMBRACING

North American Indian Stone Implements, Mound Builders,
Pottery, Early Aztec Terra Cotta Portrait Heads, Stone
Pipes, Bows, Arrows, South Sea Islands War Clubs,
Indian Wearing Apparel, &c.

TO BE SOLD

Monday Afternoon, July 9th, at 2.30 o'clock, and
Tuesday Morning and Afternoon, July 10th, 1917,
AT 10.30 A. M., AND 2.30 O'CLOCK P. M.

STAN. V. HENKELS
AUCTION COMMISSION MERCHANT
1304 WALNUT STREET
PHILADELPHIA, PA.

The only Auction House in the country where the Books are catalogued by the person who cries the sale—an advantage not to be lightly overlooked.

NOTICE.

Bids will be executed by the Auctioneer without extra charge.

Bids are always so much per piece, unless otherwise stated in catalogue.

TERMS OF SALE—CASH.

All purchases must be settled for and removed on day immediately following the sale.

STAN. V. HENKELS,
AUCTION COMMISSION MERCHANT,
1304 Walnut Street,
PHILADELPHIA, PA.

MAURICE H. POWER, PRINTER
1118-16 Sansom Street
Philadelphia

139701
581

REMARKS.

This is one of the most important, varied and largest Collections of North American Indian Stone Implements, Peruvian Pottery and Aztec Antiquities that has been offered to the Public for many years. It was gathered by the late Charles Steigerwalt, of Lancaster, Pennsylvania, and includes the noted Collections of Indian Stone Implements, formed by Samuel H. Zahm and H. L. Simon, of Lancaster, Pennsylvania, each of whom were indefatigable researchers in Pennsylvania for Relics of the Indians who once inhabited that Country, and principally of the Susquehanna Valley. It contains besides many fine pieces owned by the late Michael Newbold, of New Jersey, as well as the Inca Pottery, gathered in Peru by the late George W. Kiefer, of New York, and the Aztec and Maya Stone and Terra Cotta Idols, Portrait Heads, &c., gathered in Mexico by the late William Niven, of New York. There are also included many Relics of the Indians who inhabited the various States of the Union.

The Collection as a whole embraces fine Spear Heads, rare Stone Pipes, Axes, Pestles, Banner Stones, Gorgets, Beads, Wampum, Pottery, War Clubs, &c., besides many rare Specimens of Mound Builders Pottery.

Every Lot in the Catalogue has been carefully tagged and described according to locality. My descriptions are terse and probably not adequate to the lots described, being aware of the difficulty of purchasing by Catalogue description, I depend upon the personal inspection of those interested.

inspection.

STAN. V. HENKELS.



CATALOGUE

STONE AXE HEADS FROM NEW JERSEY.

- 1 Broad Groove, both sides flat. Mt. Holly. 9 1-2 in. x 4 1-4 in.
- 2 Encircling Groove, one side flat. Camden County. 9 in. x 3 1-2 in.
- 3 Encircling Groove, butt long and tapering. Prospertown, Ocean County. 8 1-2 in. x 4 in.
- 4 Broad Deep Groove, front edge grooved. Craft's Creek. 7 1-2 in. x 3 3-4 in.
- 5 Groove Near Butt, both sides flat. Collier's Mill. 9 in. x 3 1-2 in.
- 6 Groove Near Butt, flat tapering sides. Craft's Creek. 9 in. x 3 1-2 in.
- 7 Double Groove. Mercer County. 8 1-2 in. x 4 1-2 in.
- 8 Encircling Groove, sharp edge. Ocean County. 8 in. x 4 in.
- 9 Front Side Flat for Wedge. Burlington County. 7 in. x 4 in.
- 10 Broad Deep Groove, polished black stone. Burlington County. Fine. 6 in. x 3 1-2 inches.
- 11 Long Tapering Butt, encircling groove. Burlington County. Rare form. 9 1-2 in. x 3 in.
- 12 Broad Deep Groove. Crosswick Creek. Polished, fine. 7 in. x 4 in.
- 13 Broad Deep Groove. Burlington County. Very fine. 5 in. x 3 in.
- 14 Broad Deep Groove. Porphyry. Shrewsbury. Fine specimen. 4 1-4 in. x 2 1-2 in.
- 15 Double Encircling Groove. Gloucester County. Very rare. 4 in. x 2 1-2 in.
- 16 Encircling Groove. Burlington County. 6 in. x 3 1-4 in.
- 17 Deep Grooves, various sizes. All New Jersey. 7 pieces
- 18 Encircling Grooves, various sizes. All New Jersey. Good lot. 3 pieces

- 19 Encircling Grooves, various sizes. All New Jersey. 3 pieces
 20 Deep Grooves, various sizes. All New Jersey. 4 pieces

ADZES.

- 21 Adze, evidently used in charred wood. Lancaster Co., Pa.
 22 Adze, sharp edge. Columbus Co., N. C.
 23 Adze, grooved. Conestoga Creek, Lancaster, Pa.
 24 Adze. Harding Co., Ohio.

HATCHET HEADS FROM PENNSYLVANIA.

- 25 Hatchet Head, deep groove. Lancaster Co.
 26 Hatchet Head, deep groove. Lancaster Co.
 27 Hatchet Head, encircling groove. Lancaster Co.
 28 Hatchet Head, sharp edge. Lancaster Co.
 29 Hatchet Head, deep groove. Lancaster Co.
 30 Hatchet Head, encircling groove. Lancaster Co.
 31 Hatchet Head, encircling groove, sharp edge. Lancaster Co.
 32 Hatchet Head, encircling groove. Lancaster Co.
 33 Hatchet Head, encircling groove. Lancaster Co.
 34 Hatchet Head, one side grooved. Lancaster Co.
 35 Hatchet Head, encircling groove, sharp edge. Lancaster Co.
 36 Hatchet Head, sharp edge. Churchtown, Lancaster Co.
 37 Hatchet Head, encircling groove. Lancaster Co.
 38 Hatchet Head, encircling groove. Dauphin Co.
 39 Hatchet Head, deep groove. Marsh Run, York Co.
 40 Hatchet Heads. Various sizes. All from Penn^a. 5 pieces

-
- 41 Hatchet Head, deep groove. Wabash Co., Indiana.
 42 Hatchet Head, encircling groove. Harding Co., Ohio.
 43 Tomahawk or Hatchet Head, chipped flint. Barton, Alabama.
 44 Tomahawk or Hatchet Head, chipped flint. Barton, Alabama.
 45 Ceremonial Axe Head, encircling groove at center. Cooper Hill, Gloucester Co., N. J. 4 1-2 in. x 1 3-4 in.

AXE HEADS FROM MARYLAND.

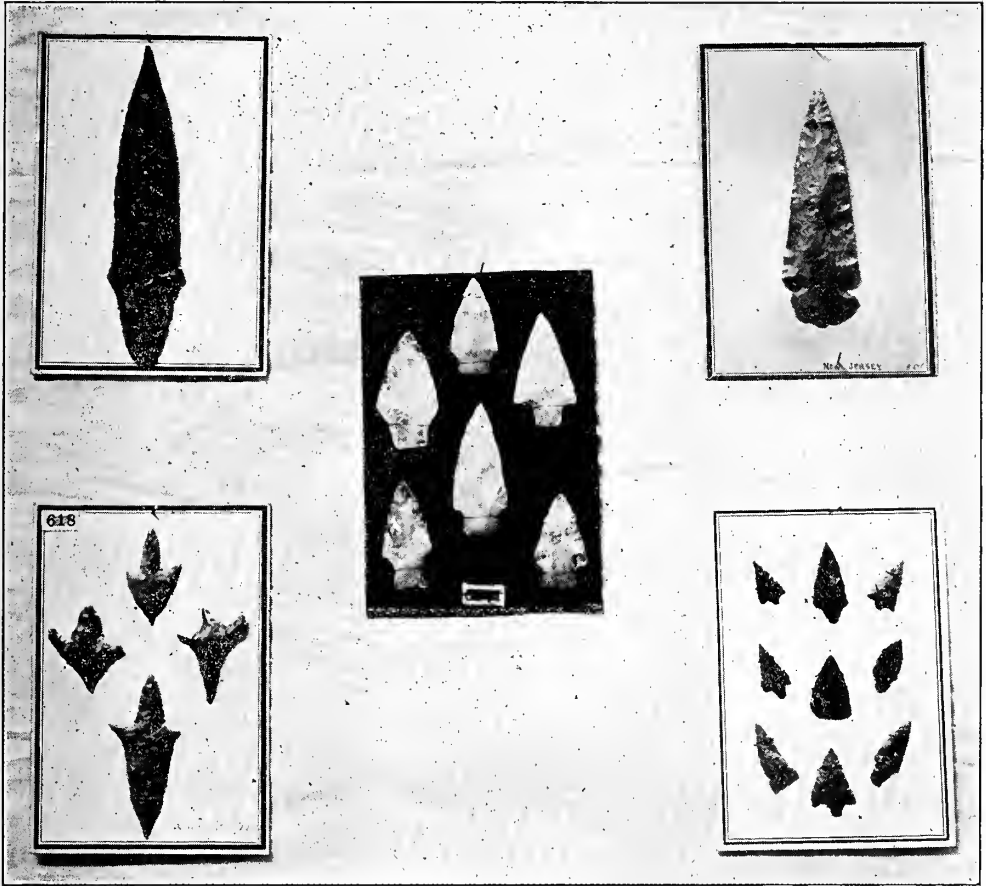
- 46 Encircling Groove. River stone. A genuine Susquehannock. Perryville. 10 1-2 in. x 5 in.

- 47 Shallow Groove. Port Deposit. 11 in. x 3 in.
- 48 Deep Groove. River stone. Roberts Island. 8 1-2 in. x 3 3-4 in.
- 49 Deep Encircling Groove. Port Deposit. 6 in. x 4 1-2 in.
- 50 Encircling Groove. Harford County. 8 in. x 4 in.
- 51 Encircling Groove. Cecil County. 5 1-2 in. x 3 1-2 in.
- 52 Axe Heads. Various sizes. All from Maryland. 8 pieces.

AXE HEADS FROM VARIOUS STATES.

- 53 Broad Shallow Groove. Frederick Co., Va. 9 1-2 in. x 3 1-2 in.
- 54 Encircling Edge. Nottoway Co., Va. 6 in. x 3 in.
- 55 Broad Deep Groove. Union Co., Tenn. 5 in. x 2 3-4 in.
- 56 Encircling Groove. Montgomery Co., Tenn. 4 in. x 3 1-4 in.
- 57 Deep Broad Groove. Nottoway Co., Va. 9 in. x 4 1-4 in.
- 58 Encircling Groove. Powhattan Co., Va. 6 1-2 in. x 3 in.
- 59 Encircling Groove. Yates Co., N. Y. 5 1-2 in. x 3 in.
- 60 Deep Groove, and grooved for wedge. Ulster Co., N. Y. 7 1-2 in. x 3 1-2 in.
- 61 Deep Groove, sharp edge. Springtown, N. Y. 4 1-2 in. x 2 1-2 in.
- 62 Encircling Groove. Tompkins Co., N. Y. 5 1-2 in. x 3 in.
- 63 Encircling Groove. Wabash Co., Indiana. 6 in. x 3 1-2 in.
- 64 Encircling Groove, sharp edge. Miami Co., Indiana. 6 in. x 3 in.
- 65 Deep Groove. Franklin Co., Indiana. Unusual form. 5 1-4 in. x 3 1-2 in.
- 66 Deep Groove. Franklin Co., Indiana. 6 in. x 3 1-4 in.
- 67 Axe Head or Rock Splitter, encircling groove, three sided, pointed edge. Miami Co., Indiana. Curious and rare. 7 in. x 4 in.
- 68 Encircling Groove, near center. Richland Co., Ohio. Weight, 8 pounds. 8 1-2 in. x 5 3-4 in.
- 69 Deep Groove, sharp edge. Wyandot Co., Ohio. 11 in. x 4 in.
- 70 Broad Deep Groove. Smithfield, Ohio. 4 1-2 in. x 3 in.
- 71 Deep Groove. Sandusky Co., Ohio. 6 1-2 in. x 3 1-2 in.

- 72 Shallow Groove. Lawrence Co., Ohio. 5 1-2 in. x 3 1-4 in.
- 73 Encircling Groove. Darke Co., Ohio. 4 1-2 in. x 3 1-2 in.
- 74 Deep Groove. Licking Co., Ohio. Crude shape. 4 1-2 in. x 2 1-2 in.
- 75 Groove, near butt, sharp edge. Cooper Co., Mo. 5 1-2 in. x 2 3-8 in.
- 76 Encircling Groove. St. Louis Co., Mo. 5 1-2 in. x 2 1-2 in.
- 77 Encircling Groove. Black Hawk Co., Iowa. 5 in. x 2 1-2 in.
- 78 Encircling Groove, sharp edge. Wyandotte Co., Kansas. 5 1-2 in. x 2 3-4 in.
- 79 Encircling Groove. Wyandotte Co., Kansas. 6 1-2 in. x 3 1-4 in.
- 80 Encircling Groove. Wyandotte Co., Kansas. 6 in. x 3 1-4 in.
- 81 Broad Groove. Hancock Co., Kentucky. 6 in. x 4 1-2 in.
- 82 Deep Groove, sharp edge. Breckenridge Co., Kentucky. 7 in. x 4 in.
- 83 Deep Groove. North Carolina. Fine. 5 1-2 in. x 3 1-4 in.
- 84 Deep Groove, sharp edge. Hawkins Co., Tenn. 7 in. x 3 1-4 in.
- 85 Deep Groove. Lewis Co., Kentucky. 6 in. x 2 1-2 in.
- 86 Hatchet Encircling Groove. Breckenridge Co., Kentucky. 5 in. x 2 in.
- 87 Shallow Encircling Groove. Newcastle Co., Delaware. Crude. 6 1-2 in. x 3 1-2 in.
- 88 Shallow Encircling Groove. Newcastle Co., Delaware. 5 in. x 2 1-2 in.
- 89 Shallow Encircling Groove. St. Clair Co., Illinois. 4 1-2 in. x 2 3-4 in.
- 90 Shallow Deep Groove. Berkshire Co., Mass. 4 in. x 3 in.
- 91 Shallow Deep Groove. Accomac Co., Va. 4 3-4 in. x 2 3-4 in.
- 92 Shallow, not grooved, thin. Nottoway Co., Va. 8 in. x 3 1-2 in.
- 93 Shallow, not grooved. Nottoway Co., Va. Crude. 8 in. x 3 1-4 in.
- 94 Shallow Deep Groove. Paleolithic. Nottoway Co., Va. 5 in. x 4 in.



No. 476
No. 526

No. 507

No. 454
No. 524

- 95 Battle-Axe, encircling groove. Lasalle Co., Ill. 4 1-2 in.
x 3 in.

AXE HEADS FROM LANCASTER COUNTY, PENNA.

- 96 Broad Deep Groove, sharp edge. Susquehannock Tribe.
Weight, 7 1-2 lbs. 13 1-2 in. x 4 in.
- 97 Broad Deep Groove, sharp edge. 11 in. x 3 1-2 in.
- 98 Broad Deep Groove. Susquehannock Tribe. Weight, 7 1-2
lbs. 12 1-2 in. x 5 in.
- 99 Broad Deep Groove. 9 in. x 5 in.
- 100 Grooved, not quite finished. Susquehannock Tribe. 9 in.
x 4 in.
- 101 Encircling Groove. Susquehannock Tribe. 10 1-2 in. x
5 in.
- 102 Deep Groove, sharp edge. 11 1-2 in. x 3 1-2 in.
- 103 Indented. Susquehannock Tribe. River stone. 13 in. x
4 1-2 in.
- 104 Deep Groove. 9 1-2 in. x 3 1-2 in.
- 105 Deep Groove, sharp rounding edge. 10 3-4 in. x 3 in.
- 106 Deep Grooves, various sizes. 4 pieces
- 107 Encircling Groove, thin blade. 8 in. x 4 in.
- 108 Deep Grooves. Various sizes. 5 pieces
- 109 Deep Grooves. Various sizes. 8 pieces
- 110 Encircling Groove. River stone. 5 1-4 in. x 2 3-4 in.
- 111 Encircling Groove, sharp edge. 6 1-2 in. x 4 in.
- 112 Encircling Groove. Crude. 7 in. x 4 in.
- 113 Encircling Groove, blunt edge. Milky quartz. Very rare.
5 1-4 in. x 3 in.
- 114 Grooved. Various sizes. Some crude. 16 pieces
- 115 Grooved. Various sizes. All large. 6 pieces
- 116 Grooved. Various sizes. All large. 10 pieces
- 117 Grooved. Various sizes. All large. 8 pieces
- 118 Deep Oblique Groove. 9 in. x 4 in.
- 119 Grooved. Various sizes. Crude. Some very old. 16 pieces
- 120 Broad Oblique Groove. 10 1-4 in. x 4 in.
- 121 Encircling Groove. 5 in. x 2 3-4 in.
- 122 Encircling Groove. 5 in. x 3 3-4 in.
- 123 Grooved Deep. Various sizes. All large. 5 pieces

- 124 Grooved Deep. Various sizes. Some large. 10 pieces
 125 Encircling Groove. Various sizes. 10 pieces

AXE HEADS FROM YORK COUNTY, PENNA.

- 126 Broad Groove. Crude. 9 1-4 in. x 4 in.
 127 Encircling Groove. Susquehannock Tribe. 9 in. x 5 1-4 in.
 128 Shallow Groove. Susquehannock Tribe. 11 in. x 4 1-2 in.
 129 Encircling Groove. 4 3-4 in. x 3 1-2 in.
 130 Shallow Groove, very thin. 7 in. x 4 1-2 in.
 131 Grooved. Various sizes. All large. 6 pieces

AXE HEADS FROM VARIOUS COUNTIES IN PENNA.

- 132 Encircling Groove, sharp edge. Bucks Co. 8 1-2 in. x 4 1-2 in.
 133 Deep Groove, sharp edge. Bucks Co. 6 in. x 3 1-2 in.
 134 Encircling Groove. Berks Co. 6 3 4 in. x 3 1-4 in.
 135 Oblique Groove, sharp edge. Berks Co. 7 1-2 in x 3 1-4 in.
 136 Encircling Grooves. Lycoming Co. Large. 2 pieces
 137 Double Groove. Bradford Co. 5 1-4 in. x 2 1-2 in.
 138 Encircling Groove. Crude. Delaware Co. 5 in. x 2 3-4 in.
 139 Deep Groove. Beaver Co. 7 in. x 3 1-2 in.
 140 Shallow Groove. Monroe Co. 7 in. x 3 3-4 in.
 141 Encircling Groove. Beaver Co. 6 in. x 3 in.
 142 Encircling Groove. Delaware Co. 5 in. x 3 in.
 143 Grooved. All large. Various parts of Penna. 6 pieces
 144 Encircling Groove. Dauphin Co. 5 in. x 3 1-4 in.
 145 Deep Grooved. Medium size. Various Counties. 8 pieces
 146 Encircling Grooves. Medium size. Various Counties. 7 pieces

-
- 147 Hatchet. Striped, gray stone. Burlington Co., N. J. 2 3-4 in. x 2 1-2 in.
 148 Hatchet. Encircling groove. Salem Co., N. J. 3 1-2 in. x 2 in.
 149 Hatchet. Encircling groove. Burlington Co., N. J. 3 1-4 in. x 2 1-4 in.
 150 Hatchet. Encircling groove at centre. Burlington Co., N. J. 2 1-4 in. x 2 1-2 in.

- 151 Hatchet. Encircling groove. Camden Co., N. J. 3 1-4 in. x
1 3-4 in.
- 152 Hatchet. Encircling groove. Camden Co., N. J. 2 1-2 in. x
1 5-8 in.
-
- 153 Ceremonial Object. 1 1-2 in. wide 6 in. long.
Rare form, from a mound near Hamilton, Ohio.
- 154 Ceremonial Axe. Not drilled. Boone Co., Kentucky.
8 1-2 in. x 2 5-8 in.

PESTLES FROM NEW JERSEY.

- 155 Round. Brown sandstone. Monmouth Co. 19 in. long.
- 156 Round and Tapering. Brown sandstone. Burlington Co.
18 1-2 in. long.
- 157 Nearly Round, tapering. Hunterdon Co. 19 1-2 in. long.
- 158 Round and Tapering. Biddle Island. 18 1-2 in. long.
- 159 Round and Tapering. Various places. 6 pieces
From 13 to 17 inches long.
- 160 Round and Tapering. Brown sandstone. Burlington Co.
14 in. long.
- 161 Round and Tapering. Brown sandstone. Burlington Co.
14 1-2 in. long.
- 162 Round and Tapering. Various places. 7 pieces
From 10 1-2 to 13 inches long.
- 163 Round and Tapering. Monmouth Co. 12 1-2 in. long.
- 164 Round and Tapering. Various places. 5 pieces
From 7 1-2 to 10 inches long.

PESTLES FROM PENNSYLVANIA.

- 165 Corn Crusher. Flat. Fine specimen. Lancaster Co.
16 in. long.
- 166 Pestle. Round and tapering. Susquehannock. Lancaster
Co. 14 in. long.
- 167 Pestle. Round and tapering. Lancaster Co. 11 in. long.
- 168 Pestle. Round and tapering. Lancaster Co. 12 1-2 in. long.
- 169 Pestle. Round, tapering and flat. All Lancaster Co.
From 9 to 11 inches long. 7 pieces
- 170 Pestles. Round and tapering. All Lancaster Co. 7 pieces
From 9 to 11 inches long.

- 171 Pestles. Round and tapering. All Lancaster Co. 8 pieces
From 7 to 11 inches long.
- 172 Pestle. Round and tapering. Perfect shape. Lancaster
Co. 7 1-2 in. long.
- 173 Pestle. Round and tapering. Fine. Lancaster Co.
9 in. long.
- 174 Pestle. Four sided, rounded ends. Lancaster Co. 7 1-2
in. long.
- 175 Flat, rounded ends. Rare shape. Lancaster Co. 6 1-2 in.
long.
- 176 Pestle. Round, river stone. Lancaster Co. 6 in. long.
- 177 Pestle. Round, for grinding paint. Quartz. Lancaster
Co. 3 in. long.
- 178 Pestle. Kidney shape, polished. Lancaster Co. 3 3-4 in.
long.
- 179 Pestle. Round and tapering. Lancaster Co. 8 pieces
From 6 1-2 to 8 inches long.
- 180 Pestles. Round. Lancaster Co. 6 pieces
From 3 1-4 to 5 1-2 inches long.
- 181 Pestles. Broken. Lancaster Co. 5 pieces
- 182 Pestle. Probably used in paint cup. Lancaster Co. 3 1-2
in. long.

PESTLES FROM VARIOUS STATES.

- 183 Pestles. For paint or herbs. Burlington Co., N. J.
From 3 to 5 inches long. 5 pieces
- 184 Pestle. Slightly irregular. Seabrook, N. H. 13 in. long.
With apparent remains of roughly carved human figure.
- 185 Pestle. Tapering to one end. Miami Co., Indiana. 14
in. long.
Weight 7 1-2 lbs.
- 186 Pestle. Round, tapering. Hard, dark stone. Dakota.
14 in. long.
- 187 Pestle. Flattened, rounded ends. Grafton Co., N. H.
12 in. long.
- 188 Pestle. Round, tapering. Rhea Co., Tenn. 10 1-2 in. long.
- 189 Pestle. Round, tapering at one end. Cecil Co., Md.
11 in. long.
- 190 Pestle. Well shaped, river stone. Harford Co., Md.
13 1-2 in. long.

- 191 Pestle. Slender tapering. York Co., Pa. 10 in. long.
- 192 Pestle. One end worked to fit hand. Yuma Co., Arizona.
8 1-2 in. long.
Unusual form.
- 193 Pestle. Hard, black stone. Vermillion Co., Indiana. 7
in. long.
Very old.
- 194 Pestle. Ten pin shape. Northumberland Co., Pa. 6 1-4
in. long.
Perfect and rare.
- 195 Pestle. Hammer dressed, tapering. Santa Barbara, Calif.
6 in. long.
- 196 Pestle. Paint grinder. Bucks Co., Pa. 6 in. long.
- 197 Pestle. Paint grinder. Santa Barbara, Calif. 5 1-2 in. long.
Curious shape.
- 198 Pestles. Round, tapering. Various parts of Penna.
From 6 1-2 to 9 inches long. 5 pieces
- 199 Pestles. Odd shapes. Various parts of Maryland.
From 6 1-2 to 9 inches long. 3 pieces
- 200 Pestle. Flat oblong base, tapering top. From a mound
in Pulaski Co., Ill. 5 in. long.
- 201 Pestle. Flat base, somewhat triangular. Allen Co., Ohio.
4 1-2 in. long.
- 202 Pestle. Bell shape, flat oblong base. Hardin Co., Ohio.
6 in. long.
- 203 Pestle. Bell shape, flat base. Wyandot Co., Ohio. 5 in.
long.
- 204 Pestle. Bell shape, flat base. Allen Co., Ohio, 5 1-4 in.
long.
- 205 Pestle. Bell shape, broken. Wyandot Co., Ohio.
- 206 Pestle. Flat base, tapering. Scioto Co., Ohio. 4 in. long.
- 207 Pestle. Flat oblong base. Hancock Co., Ohio. 4 1-4
in. long.
- 208 Pestle. Porphyry, may have been originally a Celt. Har-
din Co., Ohio. 4 1-2 in. long.
- 209 Pestle. Probably for paint cup. Darke Co., Ohio. 3 in.
long.
- 210 Pestle. For paint. Flat, D shape, open in center.
Straight bar, 1 inch thick, and bar 1 1-4 inches wide.

forming handle. Said to have been used as a weapon in local quarrels. British Columbia.

- 211 Cup Stone, shaped like a Pestle. Two opposite sides flattened, and each having four deep cups, apparently a combined pestle and nut cracking stone. Gloucester Co., N. J. 8 1-2 in. long.
- 212 Cup Stone. Celt shape, blunt edge. Two cups on one face, and one cup on other. Burlington Co., N. J. 4 1-2 in. long.

HAMMER STONES.

- 213 Hammer Stone. Oblong cups in faces. Lebanon Co., Pa. 3 1-4 in. x 2 3-4 in.
- 214 Hammer Stone. Two cups in faces. Monroe Co., Pa.
- 215 Hammer Stone. Two cups in faces. Lycoming Co., Pa.
- 216 Hammer Stone. Oblong deep cups in faces. Burlington Co., N. J. 3 1-2 in. x 2 1-2 in.
- 217 Hammer Stone. Deep cups in faces. Delaware Co., Pa.
- 218 Hammer Stone. Probably used as a Muller. Lebanon Co., Pa.
- 219 Hammer Stone. Flat, nearly circular. Dauphin Co., Pa.
- 220 Hammer Stones. Various parts of Penna. 17 pieces
- 221 Hammer Stones. Lancaster Co., Pa. 25 pieces
- 222 Hammer Stones. Lancaster Co., Pa. 20 pieces
- 223 Hammer Stones. Lancaster Co., Pa. 17 pieces
- 224 Hammer Stone. Trenton, N. J.
- 225 Hammer Stone. Deep cups in faces. Ocean City, N. J. 4 1-2 in. x 2 1-2 in.
- 226 Hammer Stone. Deep cups in faces. Nottoway Co., Va. 3 in. x 2 1-2 in.
- 227 Hammer Stones. Various sizes. Maryland. 4 pieces
- 228 Hammer Stones. Pits in center. 8 pieces and 2 pecking stones. Lancaster Co., Pa. 10 pieces
- 229 Hammer Stones. Various sizes. Lancaster Co., Pa. 17 pieces

MULLERS.

- 230 Muller. Gloucester Co., N. J. Diameter 4 in.
- 231 Muller. Bergen Co., N. J. Diameter 4 in.
- 232 Muller. Used also as discoidal game stone. Lancaster Co., Pa.

- 233 Mullers. Various sizes. Lancaster Co., Pa. 9 pieces
 234 Muller. Nottoway Co., Va. Diameter 3 in.

CURIOUS STONE IMPLEMENTS.

- 235 Spade. May have been used as axe. 9 1-2 in. long
 3 1-2 in. wide. Crudely chipped to an edge on ends and
 sides. Lancaster Co., Pa.
- 236 Adze. One face flat, other face peaked at center, tapering
 to an edge at ends. Burlington Co., N. J. 7 1-2 in. long.
 Fine.
- 237 Stone Club. 12 1-4 in. long 1 1-2 in. wide. Tapering
 smaller at ends, knob at handle end. Very unusual form.
 Lancaster Co., Pa.
- 238 Polishing Stone, shape of corn crusher. Burlington Co.,
 N. J. 9 1-2 in. long.
- 239 Stone Hammer. Hole about 1-3 from flat end. 4 1-2 in.
 long. From Jutland, Denmark.
- 240 Stone Hatchet or Small Axe. Red, hard, flinty stone,
 polished, long edge. Zeeland, Denmark. 4 1-4 in. long.
- 241 Chipped Hoe. Purple flint. One end straight. Sharp
 all around. Fine and perfect. Lasalle Co., Illinois.
 4 5-8 in. x 3 1-2 in.
- 242 Stone Axe. Broad, shallow, encircling groove. Very old.
 From Jutland, Denmark. 5 1-2 in. x 3 3-4 in.
- 243 Stone Battle-Axe. Resembles granite, hole for handle.
 From Jutland, Denmark. 5 1-4 in. long x 1 3-4 in. thick.
- 244 Stone Ceremonial Axe. 2 1-4 in. wide at hub, through
 which is drilled a 5-8 inch hole. Double ended. 5 3-4 in.
 long. Rare and fine. Penrose Ferry, Philadelphia, Pa.
- 245 Banner Stone. Crescent shape, grooved at center. Bur-
 lington Co., N. J. 4 in. long.
- 246 Ceremonial Axe. Polished, dark gray stone, shaped like
 two crescents, merged at convex sides, points of one up-
 ward, of other downward, forming two convex edges at
 each end of the axe. 7 inches wide at points, concaving to
 1 1-2 inches wide at holed center. Wapakoneta, Auglaize
 Co., Ohio.

*Found by Caspar Volbert five miles southeast of Wapako-
 neta, Ohio. This piece was broken near the center and
 cemented, a large part of one of the wings missing, but has
 been neatly restored with metal piece.*

- 247 Rubbing Stone. Peach Bottom, York Co., Pa.
- 248 Rubbing Stone. Marsh Run, York Co., Pa.
- 249 Edge Rubbing Stone. Oblong. Cups in faces. Lancaster Co., Pa. 4 1-2 in. x 3 1-2 in.
- 250 Edge Rubbing Stone. Irregular circle. Lancaster Co., Pa. Diameter 5 in.
- 251 Rubbing Stones. Lancaster Co., Pa. 21 pieces
- 252 Rubbing Stone. Shock's Mills, Lancaster Co., Pa.
- 253 Rubbing Stone. Large groove from rubbing. Berks Co., Pa.
- 254 Rubbing Stones. Cecil Co. Md., and Nottoway Co., Va. 2 pieces
- 255 Stone Hammer. Broad deep groove. Nottoway Co., Va. 3 3-4 inches long.
- 256 Stone Hammer. Encircling groove, broken. Lancaster Co., Pa. 4 3-4 in. long.
- 257 Hammer or Maul. Deep encircling groove. Vermillion River, Ill. 5 3-4 in. long.
- 258 Stone Hammer. Crude. Lancaster Co., Pa. 5 in. long.
- 259 Spade. Sandstone. Oblong. Lancaster Co., Pa. 10 in. long.
- 260 Stone Hammers. Various sizes. Lancaster Co., Pa. 7 pieces
- 261 Stone Hammer. Encircling groove. Lancaster Co., Pa. 2 1-2 in. long.
- 262 Stone Hammer. Notched at sides. Burlington Co., N. J. 2 1-2 in. long.
- 263 Stone Hammer. Broad deep groove. Hardin Co., Ohio. 3 1-2 in. long.
- 264 Stone Hammer. Broad deep groove. Greene Co., Ohio. 2 1-4 in. long.
- 265 Short Stone Hammer. Broad encircling groove. Burlington Co., N. J. 2 1-2 in. wide.
- 266 Rubbing Stone. Hardin Co., Ohio. 3 1-4 in. x 2 1-4 in.
- 267 Stone Hammer. Encircling groove. Cecil Co., Md. Diameter 2 1-4 in.
- 268 Small Stone Hammer. Faint groove. Lancaster Co., Pa. 1 3-4 in. long.



No. 536

No. 540

No. 547

No. 541

No. 537

- 269 Game Stone, dressed to circle. Lancaster Co., Pa. Diameter 3 1-4 in.
- 270 Discoidal Game Stone. Apparently very old. Lancaster Co., Pa. Diameter 4 1-2 in.
- 271 Game Stone. Triangular with angles encircling. Lancaster Co., Pa. Sides 3 1-2 in.
- 272 Featured Stone Ball. Dressed to flattened spherical form. Crude eyes and mouth cut in. Pequea Creek, Lancaster Co., Pa. Diameter 5 3-4 in.
- 273 Slung Stone or Club Head. Lancaster Co., Pa. Diameter 3 3-4 in.
- 274 Slung Shot Stones. Lancaster Co., Pa. 5 pieces
- 275 Slung Shot Stones. Lancaster Co., Pa. 5 pieces
- 276 Slung Shot Stones from Lasalle Co., Ill., Hardin Co., Ohio (2) and Toas, New Mexico. 4 pieces
- 277 Chipping Stones. Lancaster Co., Pa. 12 pieces
- 278 Chipping Stones from Cecil Co., Md., Burlington Co., N. J. and Chester Co., Pa. 4 pieces
- 279 Slung Shot or Club Head Stone. Polished. Santa Barbara, Cal. Diameter 3 3-4 in.
- 280 Polishing Stones. Burlington Co., N. J. 2 pieces
- 281 Polishing Stones. Burlington Co., N. J. 6 pieces
From 2 1-2 to 5 inches long. All show wear.
- 282 Flat Stone Argillite. 3 1-4 in. thick at center tapering to edges 10 in. x 6 in. Arrows carved in faces. Burlington Co., N. J. Very rare.
- 283 Crude Hoe, Rubbing Stones, Sinkers, etc. All Lancaster Co., Pa. 8 pieces
- 284 Game Stone, triangular, with angles encircling. Lancaster Co., Pa.
- 285 Disc, probably a game stone. Dark flint. Darke County, Ohio. Diameter 2 3-4 in.
- 286 Disc, probably a game stone. Slate. Darke County, Ohio. Diameter 2 3-4 in.
- 287 Disc, probably a game stone. Slate. Darke County, Ohio. Diameter 3 1-2 in.
- 288 Discoidal or Chungke Game Stone. Circular concave faces, with hole in center. Scioto Co., Ohio. Diameter 3 1-4 in.

- 289 Game Stone. Macon Co., Mo. Diameter 1 1-8 in.
- 290 Paleolithic Chipped Implements. Sandstone, quartz, etc. Embracing celts, arrowheads, &c. Various sizes. Mostly from Pennsylvania. 65 pieces
From 1-2 to 5 inches long. Interesting specimens of early chipped work.
- 291 Paleolithic Chipped Implements. Sandstone, quartz, &c. Including hatchets, arrowheads, &c. Various sizes. All from Lancaster Co., Pa., and mostly named as to locality. 66 pieces
From 1 1-2 to 6 inches long. Interesting specimens of early chipped work.
- 292 Broken Spear Heads, Fragments of Soapstone Pots, Small Implements. All from Washington Co., Pa. 50 pieces
- 293 Parts of Banner Stones. From 6 inches long to small pieces. All from Washington and Lancaster Counties, Pa. 14 pieces
- 294 Ceremonial Object or Manitou. Resembling a great ungrooved axe, edge sharp, forming a semicircle. Polished. Yazoo Co., Miss. 10 1-2 in. long 5 in. wide. Weighs 5 1-2 lbs.
- 295 Gouge. Grooved entire length, back of edge partly chipped. Assiscunk Creek, N. J. 7 1-2 in. long, diameter 3 1-2 in.
- 296 Chisel. Flat river stone rubbed to sharp edge at one end. Turkey Hill, Lancaster Co., Pa. 10 in. long x 2 1-2 in. wide.
- 297 Gouge. Deep groove, good cutting edge, well shaped. Lancaster Co., Pa. 8 in. long.
- 298 Gouge. Granite, grooved entire length, sharp edges polished. Very fine. Cheshire Co., N. H. 8 in. long, 2 1-2 in. wide.
- 299 Gouge. Dressed to an artistic and unusual form, deep groove 3 in. long at one end, worked out at center for handle. Rare. Roxbury, Plymouth Co., Mass. 8 in. long. 2 1-2 in. wide.
- 300 Chisel. Apparently made from a broken celt, sharp edge. Washington, Lancaster Co., Pa. 4 1-4 in. long.
- 301 Cup Stone. Flat. 1 1-2 in. thick. Cup 1 1-2 in. in diameter in each face, edge like seven-pointed star, deep

- groove between each point. Polished. Very fine. Auglaize Co., Ohio.
- 302 Paint Stone. Flat oval. 4 3-4 in. x 3 1-4 in. 1 in. thick. Long deep depression ground in each face. Washington, Lancaster Co., Pa. Rare.
- 303 Local Manitou of the Susquehannocks, somewhat resembling an axe, but apparently never used as such. Flat, nearly rectangular butt. 6 in. x 4 1-4 in. Narrow encircling groove 3 1-4 in. from butt. Face 7 in. long, 6 in. wide. Weight 9 1-2 lbs.
Found with a lot of ceremonial objects in an old Susquehannock Town near Washington, Lancaster Co., Pa.
- 304 Celt. Well shaped, battered at small end. Federal Springs, Lancaster Co., Pa. 6 1-2 in. long.
- 305 Celt. Fine shape, polished, sharp edge. Conestoga Center, Lancaster Co., Pa. 5 1-4 in. long.
- 306 Celt. Fine shape, edge somewhat blunted. Falmouth, Lancaster Co., Pa. 4 1-2 in. long.
- 307 Celt. Well shaped, edge damaged. Duncan's Island, Susquehanna River. 5 1-2 in. long.
- 308 Celt. Good shape, sharp edge. Lancaster Co., Pa. 5 in. long.
- 309 Celt. Well shaped. Shock's Hill, Lancaster Co., Pa. 6 in. long.
- 310 Celt. Fairly good shape. Shaeffer's Farm, near Lancaster, Pa. 5 1-4 in. long.
- 311 Celt. Sharp edge, roughly finished. Very old. Lancaster Co., Pa. 6 1-2 in. long.
- 312 Celt. Flattened sides. Mount Johnson Island, Lancaster Co., Pa. 4 1-2 in. long.
- 313 Celt. Crudely finished, but well shaped, very sharp edge. Federal Springs, Lancaster Co., Pa. 8 in. long.
- 314 Celt. Thin broad edge at both ends. Shock's Mills, Lancaster Co., Pa. 4 in. long.
- 315 Celt. Polished. Falmouth, Lancaster Co., Pa. 2 1-4 in. long.
- 316 Skinner. Crude form, rubbed edge. Lancaster Co., Pa. 7 1-2 in. long.
- 317 Skinner. Probably made from broken axe head. Washington, Lancaster Co., Pa. 6 1-2 in. long x 3 in. wide.

- 318 Skinner. Thin, crudely made. Marsh Run, York Co., Pa. 5 1-2 in. long.
- 319 Skinner. Thin, very old. Bainbridge, Lancaster Co., Pa. 3 1-2 in. long.
- 320 Skinner. Slate, sharp edge. Washington, Lancaster Co., Pa. 4 1-2 in. long.
- 321 Skinner. Crude, thin. Hill Island, York Co., Pa. 5 in. long.
- 322 Skinner. Crude, with well finished edge. Marsh Run, York, Co., Pa. 4 3-4 in. long.
- 323 Skinner. Sharp edge. Washington, Lancaster Co., Pa. 4 3-4 in. long.
- 324 Skinners. Various sizes. All from Lancaster Co., Pa. 9 pieces
- 325 Skinners. Various sizes, small. All from Lancaster Co., Pa. 6 pieces
- 326 Skinner. Sharp semi-circular edge, tapering to pointed end. Santa Cruz, West Indies. 3 1-4 in. long.
- 327 Celts. Lancaster Co., Pa. 3 pieces
- 328 Hide Dresser. Shell shaped, oblong, broad sharp edge. Polished Black Stone. Very fine. Marseilles, Ill. 4 in. x 3 1-4 in.
- 329 Hide Dressers. Curious shapes. Lancaster Co., Pa. 4 pieces
- 330 Hide Dressers. From New Jersey (2), and Indiana. 3 pieces
- 331 Gouge. Grooved half the length, sharp edge, deep groove across back near butt, for handle, to use as gouge adze. Rare form. Assiscunk Creek, N. J. 5 1-4 in. long.
- 332 Gouge. Good edge, deep groove entire length. Plymouth, Mass. 5 1-4 in. long.
- 333 Celt. Well shaped. Turkey Hill, Lancaster Co., Pa. 6 1-2 in. long.
- 334 Celt. Well shaped. Turkey Hill, Lancaster Co., Pa. 5 1-4 in. long.
- 335 Celt. Edge dressed sharp all around. Bainbridge, Lancaster Co., Pa. 6 1-2 in. long.
- 336 Celt. Well shaped. Bainbridge, Lancaster Co., Pa. 4 1-2 in. long.

- 337 Celt. Sharp edge. Bainbridge, Lancaster Co., Pa. 4 3-4 in. long.
- 338 Celt. Sharp edge. River Stone. Bainbridge, Lancaster Co., Pa. 4 1-2 in. long.
- 339 Celt. Broad butt end. Stark Co., Ohio. 5 in. long.
- 340 Celt. Hardin Co., Ohio. 5 in. long.
- 341 Celt. Old, weather worn. Darke Co., Ohio. 5 1-2 in. long.
- 342 Celt. Wide butt end. Green Co., Ohio. 5 in. long.
- 343 Celt. Wood Co., Ohio. 4 in. long.
-
- 344 Steel Axe Heads, holed for handles, including one hoe and one hatchet. Various sizes. 7 pieces
All of these axe heads were found in the vicinity of the old Susquehannock Town, near Washington, Lancaster Co., Pa. They show evidence of great age and were very likely obtained from the early French Traders. When Captain John Smith ascended the Susquehanna River, in 1608, he found the Susquehannocks using steel hatchets and other implements which they had obtained from the French on the St. Lawrence River, where they went to dispose of their furs.
- 345 Parts of Stone Bowls. Found at Bainbridge, Lancaster Co., Pa. 4 pieces
- 346 Parts of Stone Bowls. Found in Virginia and at Lancaster Co., Pa. 4 pieces
- 347 Ornamental Pottery, Mussel Shells, &c. Found at Bainbridge, Lancaster Co., Pa. 18 pieces
- 348 Celts. From Erie, Dauphin and York Counties, Pa. 4 pieces
- 349 Celts. From Madison and Hancock Counties, Ohio. 3 pieces
- 350 Celts. From Washington, Lancaster Co., Pa. 4 in. and 7 in. long. 2 pieces
- 351 Celts. From Washington, Cecil and Harford Counties, Md. 4 pieces
- 352 Celts. From Iowa, Indiana, New York, West Virginia and Illinois. 6 pieces
All labeled according to locality. Fine lot.
- 353 Celts. From Washington, Lancaster Co., Pa. 9 pieces

- 354 Celt. Sharp edge. From Washington, Lancaster Co., Pa. 10 1-2 in. x 2 1-2 in.
- 355 Celt. Thin, very sharp edge. From Washington, Lancaster Co., Pa. 5 1-2 in. x 2 1-4 in.
- 356 Celts. From New Jersey. 3 pieces
- 357 Celts. From Pennsylvania and Virginia. 3 pieces
- 358 Celt. From Hardin Co., Ohio. 4 1-2 in. x 2 in.
- 359 Celts. From Cypress Island, Susquehanna River. 2 pieces
- 360 Parts of Celts and Axes. From Lancaster Co., Pa. 29 pieces

CUP STONES, MORTARS, &c.

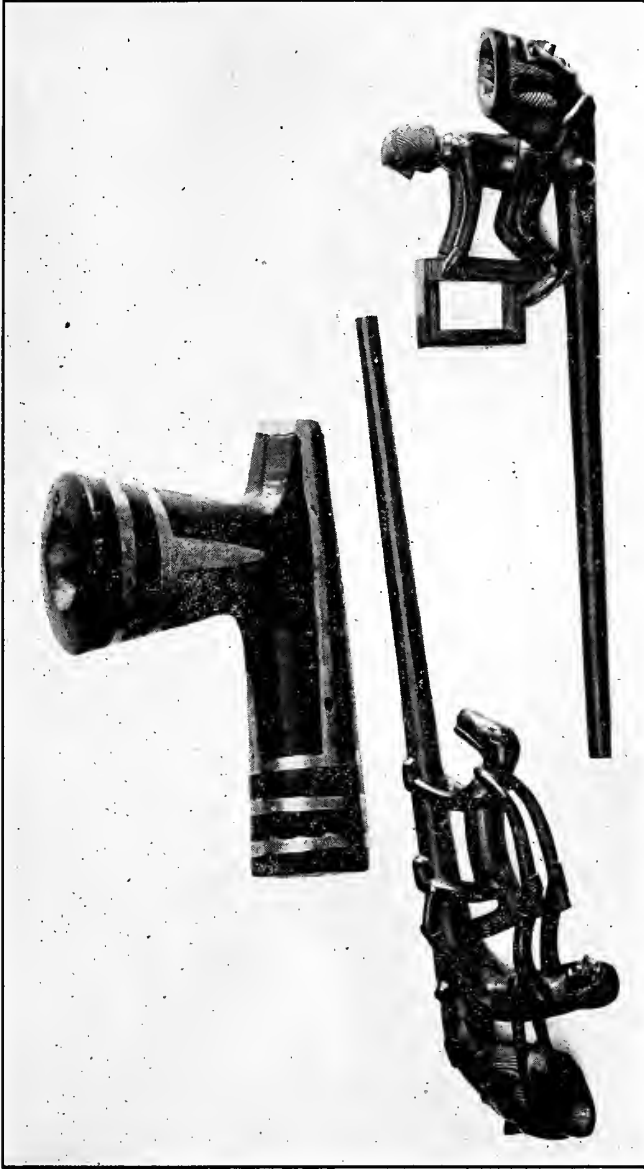
- 361 Cup Stone. Used for cracking nuts. 7 cups on each face. Flat, irregular shape. Allen Co., Ohio. 8 in. x 8 in. 2 1-2 in. thick.
Very rare.
- 362 Cup Stone. One cup on each face. Shows that it was used in making fire with bow drill. Hardin Co., Ohio. 7 in. x 5 in. 1 3-4 in. thick.
- 363 Mortar or Paint Cup. Soapstone. Oval shaped. Apparently repaired at center. Camden Co., N. J. 5 1-2 in. x 5 in. 2 in. high.
- 364 Mortar. Soapstone. Oblong. Camden Co., N. J. 7 1-4 in. x 5 1-2 in. 4 in. high.
- 365 Mortar or Paint Stone. Five sided. Defiance, Ohio. 8 in. x 8 in. 2 1-2 in. thick.
Rare specimen.
- 366 Mortar. Irregular shape. Defiance, Ohio. 8 in. by 7 in. 3 in. thick.
Deep, rare specimen.
- 367 Mortar. Sandstone. Rounded body. Washington, Lancaster Co., Pa. 6 3-4 in. Diameter 4 in. high, cup 3 in. deep.
Very old.
- 368 Paint Cup. Soapstone. Irregular shape. Falmouth, Lancaster Co., Pa. 5 in. x 3 in. x 2 3-4 in. high. Cup 1 1-2 in. deep.
- 369 Mortar or Paint Stone. Flat oval. Turkey Hill, Lancaster Co., Pa. 7 3-4 in. x 5 3-4 in. x 1 1-2 in. thick.
- 370 Portable Mortar. Flat irregular shape, deep depression

- on each side. Washington, Lancaster Co., Pa. Rare old specimen. 2 in. thick.
- 371 Mortar. Sandstone. Irregular shape. Defiance, Ohio. 9 1-2 in. x 8 in. 2 3-4 in. thick.
Very rare and old specimen.
- 372 Mortar. Irregular slab of schist rock. From the ancient Susquehannock Town. Washington, Lancaster Co., Pa. 11 1-2 in. x 10 in. x 2 1-2 in. thick.
- 373 Anvil Stone. Shallow depression in each face. Bainbridge, Lancaster Co., Pa. 7 1-2 in. x 5 in. 2 in. thick.
- 374 Paint Stone. Level faces, irregular form. Defiance, Ohio. 9 1-2 in. x 9 in.
Rare specimen.
- 375 Stone Bowl. Handle on perfect end. Falmouth, Lancaster Co., Pa. 12 in. x 10 in.
One end and one side damaged.
- 376 Anvil Stone. Oblong river stone. Shallow depression. Washington, Lancaster Co., Pa. 7 1-4 in. x 6 in.
- 377 "Mano" or Hand Stone for Crushing Grain. Gray porous stone. 8 in. x 4 in.
Procured by Norma Sirang, in Yuma Co., Arizona, in 1887.
- 378 Paint Cup. Stone like coarse marble. Lancaster Co., Pa. Diameter 4 in. 2 1-2 in. high.
- 379 Bowl. Soapstone. Manheim, Lancaster Co., Pa. 12 in. x 7 1-2 in.
Broken at one end; other end broken out at handle.
- 380 Bowl. Soapstone. Washington, Lancaster Co., Pa. 12 in. x 10 in.
Broken in two, with a hole in bottom.
- 381 Pieces of Broken Stone Bowls. Lancaster Co., Pa. 8 pieces
- 382 Similar Lot. 10 pieces
- 383 Similar Lot. Harford Co., Md. 3 pieces
- 384 Bowl. Soapstone. Handle on each end. Length, 6 1-2 in., including handles, 9 in.; width, 5 in. Evidently used for paint, remains of which are on inside. Well shaped and perfect. Found at West Lampeter, Lancaster Co., Pa.

SPEAR AND ARROW HEADS.

- 385 Spear Head. Slate. Crudely fluted. From Lancaster Co., Pa. 4 1-4 in. long.

- 386 Spear Head. Silver quartz. Coarse fluting. From Rossmere, Lancaster Co., Pa. 3 1-2 in. long.
- 387 Spear Heads. Milky quartz. Perfect point, crudely flaked. From West Lampeter, Lancaster Co., Pa. 3 1-4 in. long.
2 pieces
- 388 Spear Heads. Sandstone. Well shaped. From McCall's Ferry, Pa. 3 1-4 in. long.
2 pieces
- 389 Spear Heads. Dark gray flint. Very old. From Bainbridge, Lancaster Co., Pa. 4 and 3 3-4 in. long. 2 pieces
- 390 Spear Heads. Well shaped and pointed. From Lancaster Co., Pa. 4 in. long. 2 pieces
- 391 Spear Heads. Jasper, neat form. Very old. From Lancaster Co., Pa. 3 1-2 in. long. 2 pieces
- 392 Spear Head. Brown flint, bevelled edges, notched stem. From Lancaster Co., Pa. 4 1-2 in. long.
- 393 Spear Heads. Jasper, notched stems, barbed. From Ohio. 2 and 3 1-2 in. long. 3 pieces
- 394 Spear Heads. Very old, well shaped. From Lancaster Co., Pa. 4 1-4 in. long. 2 pieces
- 395 Spear Heads. Gray and red flint, stems missing. From Lancaster Co., Pa. 3 in. long. 2 pieces
- 396 Spear Head. Dark flint, fine shape. From Lancaster Co., Pa. 3 1-2 in. long.
- 397 Spear Head. Dark gray flint, notched stem. From Madison Co., Ill. 3 1-4 in. long, 2 in. wide.
- 398 Spear Head. Blue flint, well shaped. From Lancaster Co., Pa. 4 in. long.
- 399 Spear Head. Brown jasper, good shape. From Lancaster Co., Pa. 3 1-2 in. long, 2 in. wide.
- 400 Spear Heads. Flint, long stems. Bainbridge, Lancaster Co., Pa. 4 1-4 in. long. 2 pieces
- 401 Spear Head. Blue flint, long stem. Massac Co., Ill. 3 1-2 in. long.
- 402 Spear Head. Brown jasper, good shape. Warsaw Co., Ind. 2 3-4 in. long.
- 403 Spear Heads. Jasper, fine. Lancaster Co., Pa. 3 1-2 in. long. 2 pieces
- 404 Spear Head. Flint, notched stems. 2 3-4 in. long, and arrow, head flint. 2 1-4 in. long. Montgomery Co., Tenn. 2 pieces
- 405 Spear Head. Creamy jasper, barbed. Marseilles, Ill. 3 in. long, 2 in. wide.



No. 549

No. 546

No. 548



- 406 Spear Head. Jasper, notched stem, barbed. Massac Co., Ill. 3 1-4 in. long.
- 407 Spear Head. Flint. Auglaize Co., Ohio. 3 1-4 in. long.
- 408 Spear Head. Flint. Hancock Co., Ohio. 3 1-4 in. long.
- 409 Spear Head. Jasper. Mercer Co., Ohio. 3 1-4 in. long.
- 410 Spear Head. Jasper. Marseilles, Ill. 3 1-2 in. long.
- 411 Spear Head. Jasper, sharp point. Tennessee. 3 3-4 in. long.
- 412 Spear Head. Flint, well shaped. Montgomery Co., Tenn. 4 in. long.
- 413 Spear Heads. Jasper and flint, various shapes. Marietta, Ohio. 2 3-4 in. long. 3 pieces
- 414 Lance Head. Black Sandstone, well shaped. Very old. Lancaster Co., Pa. 7 in. long.
- 415 Lance Head. Slaty stone, sharp edges. Burlington, N. J. 6 1-4 in. long.
- 416 Spear or Knife. Blue flint, leaf-shaped. Indiana. 5 1-2 in. long, 2 3-4 in. wide.
- 417 Fishing Spears. Argellite and dark stone, slender, stemmed, well shaped. Burlington, N. J. 4 to 3 in. long. 5 pieces
- 418 Fishing Spears. Slaty rock, notched stems. Lancaster Co., Pa. 3 1-2 and 3 1-4 in. long. 2 pieces
- 419 Fishing Spears. Slaty rock, slender. Hardin Co., Ohio. 3 1-2 and 2 3-4 in. long. 2 pieces
- 420 Fishing Spear. Flint, broad notched base. Wabash Co., Ind. 2 1-4 in. long.
- 421 Spear Head. Yellow jasper, perfect. Allen Co., Ohio. 4 in. long.
- 422 Spear Head. Chalcedony, double notched stem. Rare. Auglaize Co., Ohio. 4 in. long.
- 423 Spear Head. Dark chalcedony, triangular. Fine. Ohio. 3 in. long.
- 424 Spear Head. Black flint. Marietta, Ohio. 3 in. long.
- 425 Spear Head. Grey flint, rounded base. Hardin Co., Ohio. 4 in. long.
- 426 Spear Head. Blue flint, well shaped. Washington, Pa. 4 1-2 in. long.
- 427 Spear Head. Mottled dark quartz, unusual form. Locust Grove, Pa. 4 in. long.
- 428 Spear Head. Black flint, rounded base. Marietta, Ohio. 4 in. long.
- 429 Spear Head. Dark gray flint, rounded base. Paulding Co., Ohio. 4 in. long.

- 430 Spear Head. Red flint, notched stem (repaired). Hancock Co., Ohio. 3 1-2 in. long.
- 431 Spear Head. Yellow jasper. Bainbridge, Pa. 3 1-2 in. long.
- 432 Spear Head. Yellow jasper, sharp edge all around. Fine. Northumberland Co., Pa. 4 1-2 in. long.
- 433 Lance Head. Dark yellow jasper, sharp edge all around. Lancaster Co., Pa. 5 1-4 in. long.
- 434 Lance Head. Vari-colored jasper, notched stem barbed. Very fine. Repaired. Seneca Co., Ohio. 5 1-2 in. long.
- 435 Lance Head. Dark sandstone, sharp edge all around. New-castle Co., Del. 5 1-2 in. long.
- 436 Lance Head. Striped jasper, leaf-shaped. Burlington Co., N. J. 5 1-2 in. long.
- 437 Lance Head. Blue flint. Wyandot Co., Ohio. 4 3-4 in. long.
- 438 Lance Head. Blue flint (point missing). Bainbridge, Pa. 5 1-2 in. long.
- 439 Lance Head. Mottled blue flint. Fine shape. New Jersey. 6 in. long. SEE PLATE.
- 440 Spear Head. Brown jasper (one tong gone). Washington Co., Ohio. 3 3-4 in. long.
- 441 Spear Head. Blue flint. Fishing Creek, Pa. 3 3-4 in. long.
- 442 Spear Head. Blue Flint. Lancaster Co., Pa. 3 1-2 in. long.
- 443 Spear Head. Dark flint. Ohio. 4 in. long.
- 444 Spear Head. Weathered flint. Very old. Bainbridge, Pa. 4 1-2 in. long.
- 445 Spear Head. Pink sandstone, unusual shape. Cypress Island, Pa. 3 3-4 in. long.
- 446 Two Spear Heads. Dark flint and jasper, notched stems. Warsaw, Ind. 2 3-4 and 2 1-2 in. long.
- 447 Two Spear Heads. Flint, straight base. Florida. 3 in. long.
- 448 Spear Head. Striped slate. Bainbridge, Pa. 4 1-2 in. long.
- 449 Spear Head. Dark flint, leaf-shaped. Turkey Hill, Pa. 3 3-4 in. long.
- 450 Two Spear Heads. Obsidian (one with bifurcated base serrated, and one leaf-shaped pointed at each end). Very fine. Santa Barbara, Cal. 4 1-2 in. long.
- 451 Spear Head. Brown jasper, sharp edge. New Jersey. 4 in. long.

- 452 Spear Head. Brown jasper, notched stem. Washington, Pa. 3 1-4 in. long.
- 453 Spear Head. Yellow jasper. New Jersey. 3 in. long.
- 454 Spear Head. Salmon jasper, notched stem. New Jersey. 3 3-4 in. long. SEE PLATE.
- 455 Spear Head. Grey flint, rounded barbs. Colorado Springs, Col. 4 in. long. SEE PLATE.
- 456 Spear Head. Brown jasper, notched edges, knife-shaped. New Jersey. 4 3-4 in. long.
- 457 Spear Head. Brown jasper, straight base. New Jersey. 3 in. long.
- 458 Spear Head. Brown jasper, notched edges. New Jersey. 4 in. long.
- 459 Spear Head. Brown jasper, notched stem. Burlington Co., New Jersey. 3 3-4 in. long.
- 460 Spear Head. Brown jasper, notched base. New Jersey. 3 1-4 in. long.
- 461 Spear Head. Blue flint, notched stem. Washington, Pa. 3 in. long.
- 462 Spear Head. Red quartz, sharp point. Georgia. 3 1-2 in. long.
- 463 Spear Head. Brown jasper, leaf-shaped. Burlington Co., N. J. 4 3-4 in. long.
- 464 Spear Head. Brown jasper, odd twisted form. Burlington Co., N. J. 4 1-2 in. long.
- 465 Spear Head. Dark quartz. Tishomingo Co., Miss. 4 in. long.
- 466 Spear Head. Brown flint, notched stem. Rossmere, Pa. 3 in. long.
- 467 Spear Head. Blue slate rock. Washington, Pa. 3 1-4 in. long.
- 468 Spear Head. Black flint. Mill Creek, Pa. 3 1-4 in. long.
- 469 Two Spear Heads. Brown and red jasper. Burlington Co., N. J. 3 and 2 1-2 in. long.
- 470 Three Spear Heads. Two jasper, one dark quartz. Burlington Co., N. J. 3 3-4 to 3 1-2 in. long.
- 471 Two Spear Heads. Blue and white jasper. Burlington Co., N. J. 3 and 3 1-2 in. long.
- 472 Two Spear Heads and Four Arrow Heads. Yellow and brown jasper, short notched stems. All fine and perfect. New Jersey. 3 3-4 to 2 1-4 in. long.
- 473 Two Spear Heads. Grey and yellow jasper. New Jersey. 2 3-4 in. long.

- 474 Two Spear Heads. Blue and grey flint. Florida. 2 3-4 and 2 1-2 in. long.
- 475 Two Spear Heads. Brown and black jasper. Washington, Pa. 3 in. long.
- 476 Spear Head. Mottled dark jasper, long tapering stem, sharp point. Santa Barbara, Cal. 5 in. long.
- 477 Arrow Head. Obsidian. 1 3-4 in. long, and obsidian knife 2 1-2 in. long. Santa Barbara, Cal. 2 pieces
- 478 Two Fishing Spears. Very slender. 3 1-4 in. long and 2 in. long. Very fine. Santa Barbara, Cal. 2 pieces
- 479 Eight Arrow Heads. Various colored quartz. 1 to 2 1-2 in. long. Lancaster Co.
- 480 Nine Arrow Heads. Milky quartz, notched stems and almond-shaped. Lancaster Co. 1 to 1 3-4 in. long.
- 481 Nine Arrow Heads. Milky quartz, notched and straight stems. Lancaster Co. 1 to 1 3-4 in. long.
- 482 Six Arrow Heads. Milky quartz. Assorted. Lancaster Co., Pa. 1 to 2 3-4 in. long.
- 483 Nine Arrow Heads. Slaty rock. Various shapes. Lancaster Co., Pa. 1 1-8 to 2 1-4 in. long.
- 484 Seven Arrow Heads. Odd sandstone. Various shapes. Lancaster Co., Pa. 1 1-2 to 3 in. long.
- 485 Six Arrow Heads. Dark flint. Various shapes. Lancaster Co., Pa. 2 1-4 to 1 1-4 in. long.
- 486 Nine Arrow Heads. Hard sandstone. Various shapes. Lancaster Co., Pa. 1 1-4 to 2 1-2 in. long.
- 487 Five Arrow Heads. Colored jasper, notched stems. New Jersey and Kentucky. 2 to 2 3-4 in. long.
- 488 Nine Arrow Heads. Colored jasper, notched stems. New Jersey. 2 3-4 to 1 1-2 in. long.
- 489 Two Arrow Heads. Gray flint. Lancaster Co., Pa. 2 1-4 in. long.
- 490 Three Arrow Heads. Brown jasper. Lancaster Co., Pa. 2 to 2 3-4 in. long.
- 491 Three Arrow Heads. Blue and red stone. Lancaster Co., Pa. 2 1-4 in. long.
- 492 Two Arrow Heads. Dark flint. Lancaster Co., Pa. 2 1-2 in. and 3 in. long.
- 493 Five Arrow Heads. Gray flint. Hillsboro Co., Fla. Various sizes.
- 494 Five Arrow Heads. Gray flint. Hillsboro Co., Fla. Various sizes.

- 495 Four Arrow Heads. Gray and brown flint. Hillsboro Co., Fla. Various sizes.
- 496 Four Arrow Heads. Gray and brown flint. Hillsboro Co., Fla. Various sizes.
- 497 Nine Arrow Heads. Milky quartz. New Jersey. Various sizes.
- 498 Five Arrow Heads. Pink quartz. Burlington Co., N. J. Various sizes.
- 499 Eleven Arrow Heads. Colored jasper, notched stems. Fine lot. New Jersey. Various sizes.
- 500 Two Arrow Heads and One Drill. Flint and jasper. Essex Co., Mass.
- 501 Five Arrow Heads. Crystal and milky quartz. New Jersey. 1 1-2 in. to 2 in. long.
- 502 Nine Arrow Heads. Quartz, notched stems. New Jersey. Various sizes.
- 503 Five Arrow Heads. Milky quartz, barbed. New Jersey. Various sizes.
- 504 Nine Arrow Heads. Milky quartz. New Jersey. Various sizes.
- 505 Five Arrow Heads. Colored quartz. New Jersey. 2 in. to 2 1-4 in. long.
- 506 Eight Arrow Heads. Quartz, almond-shape. New Jersey. Various sizes.
- 507 Six Arrow Heads. Crystal and milky quartz. Fine lot. New Jersey. 1 1-2 in. to 2 in. long.
- 508 Five Arrow Heads. Milky quartz. New Jersey. 1 1-4 in. to 1 1-2 in. long.
- 509 Nine Arrow Heads. Black jasper, notched stems. New Jersey. 1 in. to 1 1-2 in. long.
- 510 Five Arrow Heads. Jasper, notched stems. New Jersey. 2 in. to 2 1-2 in. long.
- 511 Seven Arrow Heads. Colored jasper, notched stems. New Jersey. 1 1-4 in. to 1 3-4 in. long.
- 512 Two Arrow Heads. Flint. Hillsboro Co., Fla. 2 1-2 in. long.
- 513 Four Arrow Heads. Flint. Warsaw, Ind. 1 3-4 in. to 2 1-4 in. long.
- 514 Three Arrow Heads. Jasper, notched stems. Michigan. 2 in. to 2 3-4 in. long.
- 515 Five Arrow Heads. Flint, notched stems. Warsaw, Ind. 1 1-4 in. to 2 in. long.

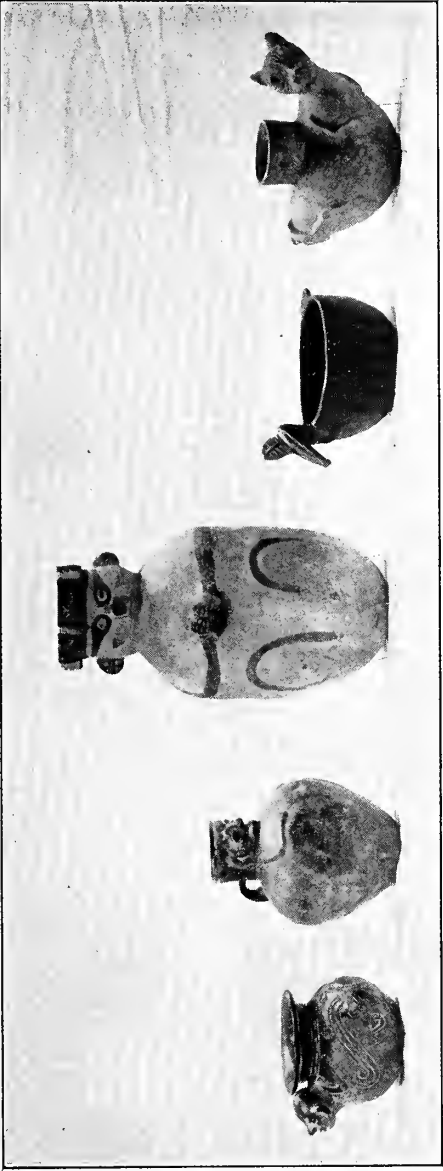
- 516 Arrow Head. Vari-colored jasper, notched stems, barbed. Fine. New Jersey. 2 1-2 in. long.
- 517 Two Arrow Heads. Flint. Marietta, Ohio. 2 1-2 in. to 2 3-4 in. long.
- 518 Three Arrow Heads. Flint, leaf-shape. Marietta, Ohio. 2 3-4 in. to 3 in. long.
- 519 Two Arrow Heads. Limestone. New Jersey. 1 1-4 in. long.
- 520 Twelve Arrow Heads. Colored jasper, notched stems. New Jersey. 1 in. to 1 1-2 in. long.
- 521 Ten Bird Arrow Heads. Milky quartz, triangular. Lancaster Co., Pa. 1-2 in. to 1 in. long.
- 522 Nine Bird Arrow Heads. Dark flint, triangular. Lancaster Co., Pa. 1-2 in. to 1 in. long.
- 523 Ten Bird Arrow Heads. Obsidian and flint, triangular. Fine. Oregon. 1-2 in. to 3-4 in. long.
- 524 Nine Bird Arrow Heads. Colored flint, notched stone. Oregon. 3-4 in. to 1 1-4 in. long.
- 525 Nine Bird Arrow Heads. Obsidian and flint, short stems. Oregon. 1-2 in. to 7-8 in. long.
- 526 Four Arrow Heads. Mottled jasper, long pointed stems. Santa Barbara, Cal. 1 1-4 in. to 2 1-2 in. long.

PIPES AND SMOKING TUBES.

- 527 Wooden Pipe. Figure of man carved on front of bowl. Lancaster Co., Pa. Fine specimen.
- 528 Stone Pipe. In shape of frog sitting on a flat oblong base, polished green stone. Lake Co., Ohio. 5 in. long, 3 1-2 in. wide.
- 529 Five Stone Pipes. Assorted. New Jersey and Ohio. Curious.
- 530 Stone Pipe. Black stone, barrel shape. Oldtown, Me. Unique.
- 531 Stone Pipe. Polished green stone; stemless type. Very fine. Lancaster Co., Pa.
- 532 Stone Pipe. Sandstone; stemless type. From a mound in Hamilton Co., Ohio.
- 533 Stone Pipe. Polished gray stone. Jay Co., Ind. 4 in. long.
- 534 Stone Pipe. Polished red catlinite, inlaid with lead at top of bowl and end of stem. Very fine. Michigan. 2 1-2 in. high, 3 1-2 in. long.
- 535 Stone Pipe. Steatite, large socket for stem; carved on bowl. Lancaster Co., Pa.

- 536 Stone Pipe. Red catlinite, finely carved Indian head with eagle's head at end of stem. Missouri. Very fine. SEE FACSIMILE.
- 537 Stone Tomahawk Pipe. Red catlinite, well carved squatting monkey clasping the tomahawk, inlaid with horse and buffalo in lead. Fine and rare. Minnesota. SEE FACSIMILE.
- 538 Stone Pipe. Monitor type, bowl at center; polished dark steatite. Holes not drilled. Lancaster Co., Pa.
- 539 Stone Pipe. Monitor type, bowl at center; polished black stone. New Jersey.
- 540 Stone Pipe. Polished black stone. Texas. From Peale's Museum. SEE FACSIMILE.
- 541 Stone Pipe. Red catlinite, horse's head. Dakota. Very fine and perfect. SEE FACSIMILE.
- 542 Mound Builder's Stone Pipe. Bird shape, crest at head. Tennessee. 7 1-2 in. long, 4 in. high. Fine and rare.
- 543 Stone Pipe. Red catlinite. Fine. Dakota.
- 544 Stone Pipe. Red catlinite. Very Fine. Dakota.
- 545 Stone Pipe. Black stone. Rare type. Lancaster Co., Pa.
- 546 Stone Pipe. Polished black stone, inlaid with red bands. Very fine and rare shape. Lancaster Co., Pa. SEE FACSIMILE.
- 547 Stone Pipe. Polished black slate, carved with human figure, curly-haired animal, ropes, pulleys, chain, etc. Tlingit Indians, Alaska. 15 1-2 in. long. Very fine and rare. SEE FACSIMILE.
- 548 Stone Pipe. Polished black stone, carved human head forming the bowl, on stem is carved a man seated, holding in leash a standing dog. Very fine. Queen Charlotte Islands, British Columbia. 10 1-2 in. long. SEE FACSIMILE.
- 549 Stone Pipe. Polished black slate, carved human head on bowl, on stem a man seated holding a square frame. Very fine. Queen Charlotte Islands, British Columbia. 9 1-4 in. long. SEE FACSIMILE.
- 550 Clay Pipe. Red glaze, unusually large flaring bowl. Rare form. Mexico. 10 in. long.
- 551 Clay Pipe. Ornamented. Very curious shape. Neatly repaired. Georgia. 9 1-2 in. long.
- 552 Stone Pipe. Polished black slate. Curiously carved with 14 human figures, animals and birds. Very rare. Tlingit Indians, Alaska. 9 in. long.
- 553 Clay Pipe. Brown glaze. Georgia.

- 554 Clay Pipe. Short bowl. Very old. Rare shape. Tennessee.
- 555 Traders' Pipes of French Manufacture. One whole and four pieces. Lancaster Co., Pa. Lot.
- 556 Clay Pipe. Unusual shape. Lancaster Co., Pa. Damaged.
- 557 Parts of Stems of Traders' Pipes. Marked with the Fleur-de-Lis.
- 558 Smoking Tube. Polished black stone. San Miguel Island, Cal. Rare. 7 1-2 in. long.
- 559 Smoking Tube. Polished dark gray stone. Roberts' Island, Md. 8 in. long.
- 560 Smoking Tube. Gray sandstone. Northumberland Co., Pa. 5 in. long.
- 561 Smoking Tube. Polished dark statite. Penrose Ferry, Philadelphia, Pa. 6 1-2 in. long.
- 562 Smoking Tube. Gray stone. San Miguel Island, Cal.
- 563 Smoking Tube. Polished black stone, tapering. Santa Barbara, Cal. 4 in. long.
- 564 Smoking Tube. Polished gray stone. Hancock Co., Ohio. 3 1-2 in. long.
- 565 Five Stone Smoking Tubes. From North Carolina, California and New Jersey. Fine and perfect.
- 566 Pieces of Clay Pipes Made by the Indians. All Pennsylvania. 509 pieces
- 567 Parts of Traders' Pipes. Mostly of French manufacture. All from Pennsylvania. 49 pieces
- 568 Parts of Clay Pipes. Lancaster Co., Pa. 10 pieces
-
- 569 Celt or Hatchet. Chipped flint, sharp edge. Massac Co., Ill. 6 in. long.
- 570 Knives. Flint and quartz. New York and Pennsylvania. 3 in. to 4 in. long. 4 pieces
- 571 Flint Implements, Knives, etc. Indiana and Tennessee. 3 pieces
- 572 Stone Knives. Ohio and Pennsylvania. 3 pieces
- 573 Two Flint Hoes. Tennessee and Illinois. 5 1-2 in. and 6 in. long.
- 574 Flint Implements. Two knives and a hatchet. Indiana, Illinois and New Jersey. 4 1-2 in. to 4 3-4 in. long. 3 pieces
- 575 Stone Drills and Perforators. Various forms. Lancaster Co., Pa. 16 pieces
- 576 Celt. Crudely dressed. Darke Co., Ohio. 6 3-4 in. long.



No. 970

No. 1029

No. 1032

No. 973

No. 1060

BEADS.

- 577 French Trader Beads. From the site of the old Susquehannock Town, Lancaster Co., Pa. Fine lot. 253 pieces
- 578 Shell Beads. "Wampum." 860 beads on a string, 39 inches long. Cayuga Co., N. Y. Rare.
- 579 Shell Beads. "Wampum." 860 beads on a string, 39 inches long. Cayuga Co., N. Y. Rare.
- 580 French Trader Beads. From the site of the old Susquehannock Town, Lancaster Co., Pa. Fine lot. 303 pieces
- 581 Three Copper Beads. Burlington Co., N. J. Very rare.
- 582 String of Thirty-two Beads. Amber, chalcedony and glass. Burlington Co., N. J. Rare.
- 583 183 French Trader Beads. From graves and old town sites of the Susquehannocks in Pennsylvania.
- 584 190 French Trader Beads. Similar to last lot.
- 585 Necklace of Shell Beads. "Wampum." White and black. Curiously strung, containing over 2,000 beads. Cayuga Co., N. Y. Fine and rare.
- 586 Necklace of Shell Beads. "Wampum." White and black. Containing about 900 beads. Cayuga Co., N. Y. Fine and rare.
- 587 243 French Trader Beads. From graves and old town sites of the Susquehannocks in Pennsylvania.
- 588 319 French Trader Beads. Similar to last lot.
- 589 275 French Trader Beads. Similar to last lot.
- 590 5 Soapstone Beads. Burlington Co., N. J.
- 591 256 French Trader Beads. Found in graves and old town sites of the Susquehannocks in Pennsylvania.
- 592 229 French Trader Beads. Similar to last lot.
- 593 860 Shell Beads. "Wampum." On string 39 inches long. Cayuga Co., N. Y. Rare.
- 594 Indian Wampum and Rare Shells Used as Money, etc. From Alaska and Florida.
- 595 Two Shell Beads. California. 2 in. and 2 3-4 in. long.
- 596 13 Shell and Clay Beads. Lancaster Co., Pa.
- 597 31 Shell Beads. California. Very old.
- 598 41 Shell and Bone Beads. Lancaster Co., Pa.
- 599 11 French Trader Beads. Found at site of old Susquehannock Town, Pa. Rare lot.
- 600 240 French Trader Beads. Found at site of old Susquehannock Town, Pa.

- 601 80 French Trader Beads. From the site of the old Susquehannock Town, Lancaster Co., Pa.
- 602 French Trader "Star" Bead. From a grave in Lancaster Co., Pa. Very rare. Odd shape.
- 603 5 French Trader "Star" Beads. Lancaster Co., Pa. Very rare.
- 604 39 French Trader Beads. Lancaster Co., Pa.
- 605 6 French Trader "Star" Beads. Lancaster Co., Pa. Very rare.
- 606 French Trader "Star" Bead. Lancaster Co., Pa. Fine and rare.
- 607 5 French Trader "Star" Beads. Lancaster Co., Pa. Rare.
- 608 26 French Trader Beads. Lancaster Co., Pa. Rare.
- 609 12 Copper Arrow Heads, 1 Bead, 1 Ornament, Copper Jew's Harp, Sewing Thimble, and other Ornaments from Indian Graves. Lancaster Co., Pa. 22 pieces
- 610 Copper Arrow Heads, Bead and other Ornaments from Lancaster Co., Pa. 30 pieces
- 611 Copper Arrow Heads, Copper Button and Jew's Harp from Indian Graves. Lancaster Co., Pa. 16 pieces
- 612 Old Masonic Cuff Links and Copper Finger Ring. Found at site of old Indian camp, Lancaster Co., Pa. Lot.
- 613 15 Stone Beads. Lancaster Co., Pa.
- 614 Stone Bead. 2 1-4 in. long, 2 in. wide. Lancaster Co., Pa.
- 615 Stone Bead. Polished, kidney shape. 2 in. wide. Auglaize Co., Ohio.
- 616 Stone Bead. Red catlinite, square. Cayuga Co., N. Y.
- 617 14 Stone Beads. Mottled green stone, highly polished. Fine lot. Burlington Co., N. J.
- 618 6 Stone Beads. Large, irregular shape. Lancaster Co., Pa.
- 619 12 Stone Beads. Mostly mottled green stone. Burlington Co., N. J.
- 620 2 Bead or Perforated Stones. May have been used as pulley-blocks. Lancaster Co., Pa.
- 621 Stone Bead. Oval. 3 1-2 in. by 2 1-2 in. Burlington Co., N. J.
- 622 Stone Bead. Polished. 2 1-2 in. long. Camden Co., N. J.
- 623 Soapstone Bead. 2 1-4 in. long. Camden Co., N. J.
- 624 Sandstone Bead. Diameter 1 3-8 in. Hunterdon Co., N. J.
- 625 Stone Bead. Countersunk hole, unusual form. Diameter 3 in. Burlington Co., N. J.

- 626 Stone Bead. 1 3-4 in. long. Burlington Co., N. J.
 627 Stone Bead. Oblong 2 1-4 in. by 1 3-4 in. Burlington Co., N. J.
 628 Stone Pendant. Oval, flat. 3 in. long. Burlington Co., N. J.
 629 16 Stone Beads and Perforated Stones. Lancaster Co., Pa.
 630 Beads and other Ornaments. Brown stone. Adams Co., Ohio. 3 pieces
 631 Carved Stone Pendant. In form of an owl. 2 Large Venetian Striped Beads, 7 Trader Beads, 3 Shell Beads, etc. Fine lot. Burlington Co., N. J.
 632 Lot of Old Brass Chest Trimmings, Buttons, etc From white traders. Lancaster Co., Pa.
 633 Nose Jewels. One in form of a human face. Red catlinite. From Western Indians. 2 pieces
 634 Claws, Tusks and Various Bones. Found among Indian remains. Lancaster Co., Pa.
 635 2 Stone Serpent Heads, Stone Charm, Small Game Stones, Small Pipe, etc. Lancaster Co., Pa. As a lot.
 636 Various Kinds of Shells. Found among Indian remains. Lancaster Co., Pa.
 637 7 Bear Teeth. Various sizes. Found among Indian remains. Lancaster Co., Pa.
 638 3 Bear Claws. From Indian remains. Hillsboro Co., Fla.
 639 Stone Ornament. Hematite. In form of human head. Found near Mendota, Indian Territory Rare.

ARROW AND SPEAR HEADS.

LANCASTER CO., PA. VARIOUS LOCALITIES.

- | | | | |
|-----|------------------------|--------------------------|------------|
| 640 | Arrow and Spear Heads. | Quartz. | 51 pieces |
| 641 | Arrow and Spear Heads. | Slate, sandstone, etc. | 71 pieces |
| 642 | Arrow and Spear Heads. | Paleolithic. | 44 pieces |
| 643 | Arrow and Spear Heads. | Various kinds of stones. | 44 pieces |
| 644 | Arrow and Spear Heads. | Slate and sandstone. | 256 pieces |
| 645 | Arrow and Spear Heads. | Some paleolithic heads. | 72 pieces |
| 646 | Arrow Heads. | Quartz. | 196 pieces |
| 647 | Arrow and Spear Heads. | Various kinds of stones. | 79 pieces |

648	Arrow and Spear Heads.	Various kinds of stones.	34 pieces
649	Arrow and Spear Heads.	Various kinds of stones.	79 pieces
650	Arrow and Spear Heads.	Various kinds of stones.	55 pieces
651	Arrow and Spear Heads.	Various kinds of stones.	75 pieces
652	Arrow and Spear Heads.	Various kinds of stones.	61 pieces
653	Arrow and Spear Heads.	Including bird arrow heads. Various kinds of stones.	55 pieces
654	Arrow and Spear Heads.	Various kinds of stones.	63 pieces
656	Arrow and Spear Heads.	Including bird arrow heads. Various kinds of stones.	53 pieces
657	Arrow and Spear Heads.	Various kinds of stones.	60 pieces
658	Arrow and Spear Heads.	Various kinds of stones.	51 pieces
659	Arrow and Spear Heads.	Various kinds of stones.	58 pieces
660	Arrow and Spear Heads.	Various kinds of stones.	74 pieces
661	Arrow and Spear Heads.	Various kinds of stones.	55 pieces
662	Arrow and Spear Heads.	Including bird arrows. Various kinds of stones.	36 pieces
663	Arrow and Spear Heads.	Various kinds of stones.	42 pieces
664	Arrow and Spear Heads.	Various kinds of stones.	48 pieces
665	Arrow and Spear Heads.	Various kinds of stones.	67 pieces
666	Arrow and Spear Heads.	Unique forms. Various kinds of stones.	27 pieces
667	Bird Arrow Heads, etc.	Various kinds of stones.	35 pieces
<hr/>			
668	Arrow and Spear Heads.	Berks Co., Pa.	54 pieces
669	Arrow and Spear Heads.	Montour Co., Adams Co., and Union Co., Pa.	41 pieces
670	Arrow and Spear Heads.	Delaware Co. and Montgomery Co., Pa.	32 pieces

- 671 Arrow and Spear Heads. Dauphin Co., Pa. 36 pieces
- 672 Arrow and Spear Heads. Schuylkill Co., Northampton Co.
and Bucks Co., Pa. 35 pieces
- 673 Arrow and Spear Heads. Chester Co., Pa. 34 pieces
- 674 Arrow and Spear Heads. Allegheny Co., Washington Co.
and Lawrence Co., Pa. 46 pieces
- 675 Arrow and Spear Heads. Lebanon Co. and Northumber-
land Co., Pa. 37 pieces
- 676 Bunt Arrow Heads. Kentucky, Ohio, Virginia, etc.
15 pieces
- 677 Arrow and Spear Heads. Cumberland Co., Perry Co. and
Juniata Co., Pa. 26 pieces
- 678 Arrow and Spear Heads. York Co., Pa. 41 pieces
- 679 Arrow and Spear Heads. Hardin Co. and Ohio Co., W. Va.
35 pieces
- 681 Arrow and Spear Heads. Charles Co., Halifax Co. and
Frederick Co., Va. 57 pieces
- 682 Arrow and Spear Heads. Lee Co., King George Co., York
Co. and Dinwiddie Co., Va. 61 pieces
- 683 Arrow and Spear Heads. Shenandoah Co. and Nottoway
Co., Va. 56 pieces
- 684 Arrow and Spear Heads. Anne Arundle Co., Harford Co.,
Frederick Co. and Queen Anne Co., Md. 103 pieces
- 685 Arrow and Spear Heads. Cecil Co., Harford Co., Wash-
ington Co. and Prince George Co., Md. 74 pieces
- 686 Arrow and Spear Heads. Ocean Co., Hudson Co. and
Camden Co., N. J. 44 pieces
- 687 Arrow and Spear Heads. Broome Co. and Seneca Co.,
N. Y. 36 pieces
- 688 Arrow and Spear Heads. Tioga Co., West Chester Co. and
Chautauqua Co., N. Y.
- 689 Arrow and Spear Heads. Allen Co., Pickaway Co., Wash-
ington Co. and Miami Co., Ohio. 35 pieces
- 690 Arrow and Spear Heads. Claremont Co., Stark Co., Jack-
son Co., Washington Co. and Darke Co., Ohio. 39 pieces
- 691 Harpoon Heads. Miami Co., Ohio. 5 pieces
- 692 Arrow and Spear Heads. Crawford Co., Paulding Co.,
Franklin Co., Wyandot Co. and Richland Co., Ohio.
40 pieces
- 693 Arrow and Spear Heads. Hardin Co., Washington Co. and
Hancock Co., Ohio. 27 pieces
- 694 Arrow and Spear Heads. Plymouth Co. and Essex Co.,
Mass. 34 pieces

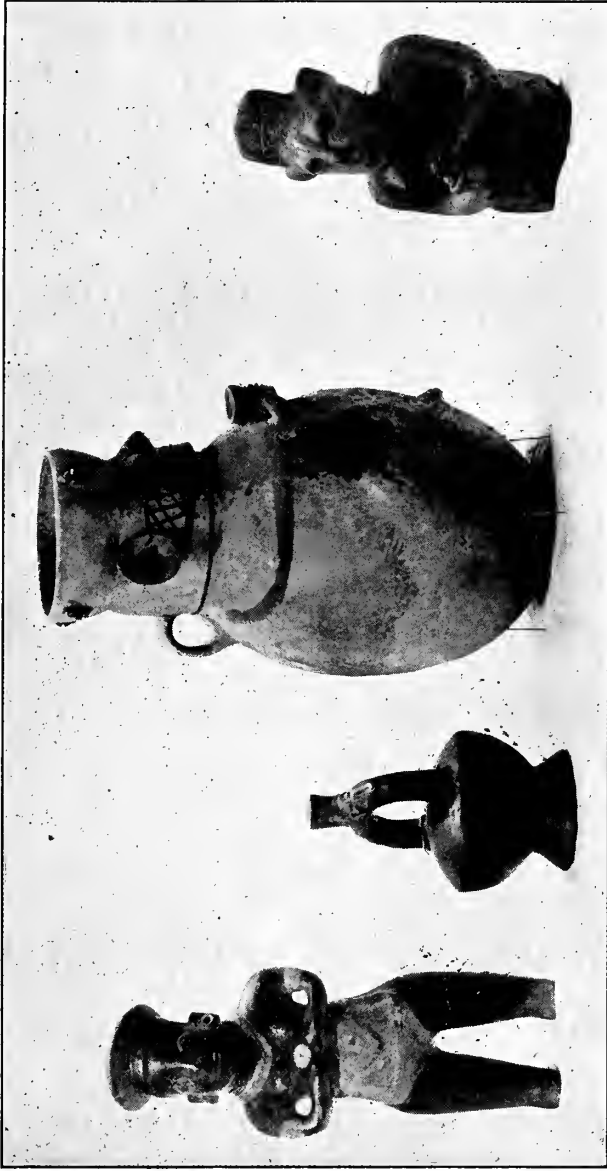
- 695 Arrow and Spear Heads. Rockingham Co. and Chelmsford Co., N. H., and Fairfield Co. and Hartford Co., Conn. 50 pieces
- 696 Arrow and Spear Heads. Bay Co., Wayne Co. and St. Clair Co., Mich. 38 pieces
- 697 Arrow Heads. Medicine Co. and Dakota Co., Minn., and Fond du Lac Co., Wis. 31 pieces
- 698 Arrow and Spear Heads. Lasalle Co. and St. Clair Co., Ill. 36 pieces
- 699 Arrow Heads. Massac Co. and Jackson Co., Ill. 20 pieces
- 700 Arrow Heads. Bladen Co., Guilford Co., Fairfield Co. and Union Co., N. C. and S. C. 43 pieces
- 701 Arrow and Spear Heads. Kosciusko Co., Merion Co. and Porter Co., Ind. 24 pieces
- 702 Arrow and Spear Heads. Porter Co., Ripley Co. and Delaware Co., Ind. 23 pieces
- 703 Arrow and Spear Heads. Kyles Mound, Ky. 65 pieces
- 704 Arrow and Spear Heads. Greenup Co. and Boone Co., Ky., and Montgomery Co., Tenn. 38 pieces
- 705 Arrow and Spear Heads. Lake Co., Putnam Co. and Gadsden Co., Fla. 31 pieces
- 706 Arrow and Spear Heads. Yazoo Co. and Tishomingo Co., Miss. 25 pieces
- 707 Arrow and Spear Heads. Cooper Co. and St. Louis Co., Mo. 18 pieces
- 708 Arrow and Spear Heads. Osage Co. and Saline Co., Mo. 9 pieces
- 709 Arrow and Spear Heads. Colbert Co., Ala.; Camden Co., Ga.; Bexar Co., Texas, etc. 43 pieces
- 710 Arrow and Spear Heads. Muscatine Co. and Pottawattamie Co., Iowa, and El Paso Co. and Las Animas Co., Col. 38 pieces
- 711 Arrow and Spear Heads. Cass Co., Saunders Co., Neb., and Wyandotte Co., Kans. 45 pieces

BANNER STONES.

- 712 Banner Stone. Drilled hole. New Jersey. 4 1-2 in. by 2 5-8 in.
- 713 Banner Stone. Drilled hole. New Jersey. Fine and rare. 2 7-8 in. long, 3 1-2 in. wide.
- 714 Banner Stone. Grooved sides. Tennessee. 3 in. long.
- 715 Banner Stone. New Jersey. Fine.

- 716 Banner Stone. Drilled hole, boat-shaped. New Jersey. Fine. 2 pieces
- 717 Banner Stone. Drilled hole. Warren Co., Ohio. 3 in. long.
- 718 Banner Stone. Polished, drilled hole. West Chester Co., N. Y. Fine. 6 in. long.
- 719 Banner Stone. Polished, striped. Sevier Co., Tenn. 2 3-4 in. long.
- 720 Banner Stone. Drilled hole. Burlington Co., N. J. 2 3-4 in. long.
- 721 Banner Stone. Drilled hole. Burlington Co., N. J. 3 1-2 in. long.
- 722 Banner Stone. Drilled hole. Camden Co., N. J. 3 1-2 in. long.
- 723 Banner Stone, or Amulet. Pick-shaped. Paulding Co., Ohio. 5 in. long.
- 724 Banner Stone, or Amulet. Boat-shaped. Wyandot Co., Ohio. 5 in. long.
- 725 Ceremonial Axe. Striped stone. Hardin Co., Ohio.
- 726 Ceremonial Axe. Ends of wings gone. Hardin Co., Ohio. 3 1-2 in. long.
- 727 Banner Stone. Drilled hole. Lancaster Co., Pa. 5 in. long.
- 728 Banner Stone. Drilled hole. Very fine. Lancaster Co., Pa. 5 3-4 in. long.
- 729 Banner Stone. Drilled hole. Burlington Co., N. J. 4 1-8 in. long.
- 730 Banner Stone. Drilled hole. Burlington Co., N. J. 3 3-4 in. long.
- 731 Banner Stone. Drilled hole. Salem Co., N. J. 4 1-2 in. long.
- 732 Banner Stone. Curved Porphyry. Drilled hole. Rare. Camden Co., N. J. 6 in. long.
- 733 Banner Stone. Drilled hole. Camden Co., N. J. 3 1-4 in. long.
- 734 Banner Stone. Drilled hole. Rare shape. Assiscunk Creek, N. J. 4 1-4 in. long.
- 735 Banner Stone. Soapstone. Drilled hole. Gloucester Co., N. J. 2 3-4 in. long.
- 736 Banner Stone. Camden Co., N. J. 2 in. long.
- 737 Banner Stone. Drilled hole. Burlington Co., N. J. 1 3-4 in. long.

- 738 Banner Stone. Drilled hole. Fine. Big Timber Creek, N. J. 5 1-2 in. long.
- 739 Ceremonial Axe. Broad sharp edge. Repaired. Miami Co., Ind. 6 in. long.
- 740 Ceremonial Axe. Slate. Fine large specimen. Harford Co., Md. 9 1-4 in. long.
- 741 Banner Stone. Lycoming Co., Pa. 4 1-2 in. long.
- 742 Ceremonial Axe. Undrilled. Fine shape. Dauphin Co., Pa. 5 1-2 in. long.
- 743 Banner Stone. Butterfly form. Lancaster Co., Pa.
- 744 Banner Stone. Drilled hole. Repaired. Boone Co., Ky. 3 1-2 in. long.
- 745 Banner Stone. Soapstone. Lancaster Co., Pa. 3 1-4 in. long.
- 746 Banner Stone. Polished Gray. Rare form. Burlington Co., N. J. 3 1-2 in. wide.
- 747 Ceremonial Axe. Striped black stone. Georgia. 3 3-4 in. long.
- 748 Banner Stone. Partly drilled. Camden Co., N. J. 5 1-4 in. long.
- 749 Banner Stone. Partly drilled. Burlington Co., N. J. 4 3-8 in. long.
- 750 Banner Stone. Hole started. Burlington Co., N. J. 2 3-4 in. long.
- 751 Banner Stone. Partly drilled. Burlington Co., N. J. 3 7-8 in. long.
- 752 Banner Stone. Partly drilled. Burlington Co., N. J. 4 in. long.
- 753 Banner Stone. Partly drilled. Rancocas Creek, N. J. 3 in. long.
- 754 Banner Stone. Partly drilled. Fine shape. Burlington Co., N. J. 8 1-2 in. long.
- 755 Banner Stone. Undrilled. Burlington Co., N. J. 4 in. long.
- 756 Banner Stone. Undrilled. Burlington Co., N. J. 3 5-8 in. long.
- 757 Banner Stone. Porphyry. Undrilled. Kinkora, N. J. 4 in. long.
- 758 Banner Stone. Undrilled. Woodbury Creek, N. J. 8 1-2 in. long.
- 759 Banner Stone. Undrilled. Burlington Co., N. J. 4 3-4 in. long.



No. 1009

No. 1030

No. 1031

No. 1013

- 760 Banner Stone. Undrilled. Burlington Co., N. J. 6 in. long.
- 761 Banner Stone. Undrilled. Gloucester Co., N. J. 5 3-4 in. long.
- 762 Banner Stone. Undrilled. Burlington Co., N. J. 6 1-2 in. long.
- 763 Banner Stone. Undrilled. Burlington Co., N. J. 6 in. long.
- 764 Banner Stone. Undrilled. Kinkora, N. J. 4 in long.
- 765 Crude Ceremonial Axe. Cypress Island, Lancaster Co., Pa. 10 1-2 in. long.
- 766 Banner Stone. Crude. Lancaster Co., Pa.
- 767 Ceremonial Axe. Slate. Harford Co., Md. 5 3-4 in. long.
- 768 Banner Stone. Unfinished. Hancock Co., Ohio. 6 in. long.
- 769 Banner Stone. Scimitar shape. Hardin Co., Ohio. 6 1-2 in. long.
- 770 Banner Stone. Unfinished. York Co., Pa.
- 771 Ceremonial Axe. Crude. Lancaster Co., Pa.
- 772 Parts of Banner Stones. Lancaster Co., Pa. 11 pieces
- 773 Parts of Banner Stones. Lancaster Co., Pa. 16 pieces
- 774 Parts of Banner Stones. New Jersey. 4 pieces
- 775 Ceremonial Axes or Banner Stones. Lancaster Co., Pa. 6 pieces
- 776 Ceremonial Axes or Banner Stones. Pennsylvania. 7 pieces
- 777 Parts of Drilled Banner Stones. New Jersey. 12 pieces
- 778 Parts of Drilled Banner Stones. New Jersey. 13 pieces

GORGETS.

- 779 Gorget. One face flat. Lasalle Co., Ill. 3 in. long.
- 780 Gorget. Flat. Hamilton, Ohio. 3 in. long.
- 781 Gorget. Slate, flat. Camden Co., N. J. 2 3-4 in. long.
- 782 Gorget. Striped stone. Massac Co., Ill. 3 in. long.
- 783 Gorget. One face flat. Cincinnati, Ohio. 3 1-2 in. long.
- 784 Gorget. One face flat. Lasalle Co., Ill. 3 in. long.
- 785 Gorget. Eighteen record notches. Hancock Co., Ohio.
- 786 Gorget. Not drilled. Hardin Co., Ohio.
- 787 Gorget. Six record notches. Hardin Co., Ohio.
- 788 Gorget. Seven record notches. Paulding Co., Ohio.
- 789 Gorget. Not drilled, boat-shaped. Wyandot Co., Ohio.

- 790 Gorget. Wyandot Co., Ohio.
 791 Gorget. Boat-shaped. Seneca Co., Ohio.
 792 Gorget. Striped slate, five record notches. Repaired.
 Sandusky Co., Ohio.
 793 Gorget. Hancock Co., Ohio.
 794 Gorget. Hardin Co., Ohio.
 795 Gorget. Allen Co., Ohio.
 796 Gorget. Hancock Co., Ohio.
 797 Gorget. Lancaster Co., Pa.
 798 Gorget. Wyandot Co., Ohio.
 799 Gorget. Lancaster Co., Pa.
 800 Gorget. Big Bone Spring, Ky.
 801 Gorget. Rare shape. Wabash Co., Ind.
 802 Gorget. Record notches. Lancaster Co., Pa.
 803 Parts of Gorgets. New Jersey. 10 pieces

PENDANTS OR ORNAMENTS.

- 804 Boat-shaped ornament. Black stone. Dauphin Co., Pa.
 805 Pendant. Record notches. Lancaster Co., Pa.
 806 Bird-shaped amulet. Wyandot Co., Ohio.
 807 Bird-shaped amulet. Auglaize Co., Ohio.
 808 Bird-shaped amulet. Allen Co., Ohio.
 809 Pendant. Hancock Co., Ohio.
 810 Pendant. Fish-shaped. Hardin Co., Ohio.
 811 Pendant. Rare form. Hardin Co., Ohio.
 812 Pendant. Spade-shaped. Wabash Co., Ind.
 813 Pendant. With many records. Repaired. Seneca Co.,
 Ohio.
 814 Pendant. Hardin, Ohio.
 815 Pendant. Sandusky Co., Ohio.
 816 Pendant. Paulding Co., Ohio.
 817 Pendant. Big Bone Spring, Ky.
 818 Pendant. Burlington Co., N. J.
 819 Pendant. Hardin Co., Ohio.
 820 Pendant. Burlington Co., N. J.
 821 Pendant. Huron Co., Ohio. 4 in. long.
 822 Pendant. Burlington Co., N. J. 4 in. long.
 823 Pendant. Unique shape. Philadelphia, Pa.
 824 Pendant. Darke Co., Ohio. 3 1-2 in. long.
 825 Pendants. Burlington Co., N. J. 3 pieces

826	Pendants.	New Jersey.	3 pieces
827	Pendants.	Ohio.	2 pieces
828	Pendants.	Lancaster Co., Pa.	2 pieces
829	Pendant.	Circular. Butler Co., Ohio.	2 3-4 in. diameter.
830	Pendant.	Monmouth Co., N. J.	
831	Pendants.	Lancaster Co., Pa.	2 pieces
832	Crude Stone Ornaments, Birds.	Maryland and Pennsylvania.	3 pieces

PLUMMETS.

833	Plummet, or Charm Stone.	Camden Co., N. J.	
834	Plummet, or Charm Stone.	Gloucester Co., N. J.	
835	Plummet, or Charm Stone.	Burlington Co., N. J.	
836	Plummet, or Charm Stone.	New Brunswick, N. J.	
837	Plummet, or Charm Stone.	Mercer Co., N. J.	
838	Plummet, or Charm Stone.	Mercer Co., N. J.	
839	Plummet, or Charm Stone.	Camden Co., N. J.	
840	Plummet, or Charm Stone.	Camden Co., N. J.	
841	Plummet, or Charm Stone.	Burlington Co., N. J.	
842	Plummet.	Burlington Co., N. J.	
843	Plummet.	Kosciuszko Co., Ind.	
844	Two Plummets.	New Jersey.	
845	Plummet, or Charm Stone.	Burlington Co., N. J.	
846	Plummet, or Charm Stone.	Rare shape. Santa Barbara, Cal.	
847	Plummet, or Charm Stone.	Rare shape. Santa Barbara, Cal.	
848	Five Plummets.	Pennsylvania, Ohio, Indiana, Illinois and Maryland.	
849	Four Plummets.	Hardin Co., Ohio.	
850	Stone Axe, Hatchet, Hammer and War-Club Head.	Lancaster Co., Pa.	4 pieces
851	Battle-Axe and Tomahawks.	Nottoway Co., Va.	4 pieces
852	Stone Tomahawks.	Good and crude forms. Lancaster Co., Pa.	6 pieces
853	Stone Tomahawks.	Ohio, Indiana and Kentucky.	4 pieces
854	Stone Tomahawks.	Pennsylvania.	4 pieces
855	Stone Sinkers.	New Jersey.	3 pieces
856	Stone Sinkers.	Ohio, Maryland and Pennsylvania.	10 pieces
857	Stone Sinkers.	Pennsylvania.	5 pieces
858	Stone Sinkers.	Pennsylvania.	10 pieces

- 859 Stone Sinkers. Pennsylvania. 10 pieces
- 860 Stone Sinkers. Pennsylvania. 11 pieces
- 861 Stone War-Club Head. Circular. Large tapering hole. Santa Barbara, Cal. 4 1-4 in. diameter.
- 862 Stone War-Club Head. Nearly spherical. Santa Barbara, Cal. 3 3-4 in. diameter.
- 863 Stone War-Club Heads. Pennsylvania. 8 pieces
- 864 Stone Hammers. Ohio and Kansas. 2 pieces
- 865 Stone Hammers. Pennsylvania. 4 pieces
- 866 Stone Gauge. Burlington Co., N. J. 6 in. long.
- 867 Stone Chisel. Sharp edge. Burlington Co., N. J. 7 in. long.
- 868 Notched Stone. Probably used for winding fishline. Bridgeport, N. J.
- 869 Notched Stone. Probably used for winding fishline. Penrose Ferry, Philadelphia, Pa.
- 870 Notched Stone. Probably used for winding fishline. Bridgeport, N. J.
- 871 Notched Stones. For evening bow-strings. Maryland and New Jersey. 2 pieces
- 872 Stone "Manos." For crushing grain. Arizona. 3 pieces
- 873 Chipped Hoe. Stone. Fine. Jackson Co., Ill. 7 in. long.
- 874 Stone Hoe. Crude form. York Co., Pa.
- 875 Stone Hoes. Crude forms. Pennsylvania. 4 pieces
- 876 Chipped Stone Spade. Curved sides. Jackson Co., Ill. 14 in. long.
- 877 Chipped Stone Spade. Fine and rare. Jackson Co., Ill. 10 in. long.
- 878 Chipped Stone Spade. Mississippi Co., Mo. 8 1-2 in. long.
- 879 Chipped Stone Hoe. Lancaster Co., Pa. 7 1-4 in. long.
- 880 Chipped Stone Spade. Lasalle Co., Ill. 9 1-2 in. long.
- 881 Stone Knife. Probably used as Tomahawk. Burlington Co., N. J.
- 882 Stone Knife. Probably used as Tomahawk. Burlington Co., N. J.
- 883 Stone Knife. Gloucester Co., N. J.
- 884 Stone Knives. Ohio, Kentucky, etc. 5 pieces
- 885 Stone Knife. Pulaski Co., Ill. 6 in. long.
- 886 Stone Knife. Montgomery Co., Tenn. 6 in. long.
- 887 Stone Knives. Lancaster Co., Pa. 9 pieces

- 888 Stone Knife. Rare form, semi-circular edge. Northumberland Co., Pa. 6 1-4 in. x 2 1-2 in. wide.
- 889 Stone Knives. Ohio and New Jersey. 2 pieces
- 890 Leaf-shaped Stone Implements. Lancaster Co., Pa. 4 pieces
- 891 Leaf-shaped Stone Implements. Ohio, Missouri, Texas, etc. 6 pieces
- 892 Leaf-shaped Stone Implements. Lancaster Co., Pa. 7 pieces
- 893 Leaf-shaped Stone Implements. Lycoming Co., Pa. 5 pieces
- 894 Leaf-shaped Stone Implements. Pennsylvania. 8 pieces
- 895 Stone Cup, made from a pebble. Burlington Co., N. J.
- 896 Stone Bar Amulet. Oblique hole at each end. Ohio.
- 897 Smoothing Stone, for making pottery. Bridgeport, N. J.
- 898 Stone Pestles, for grinding paint. Burlington Co., N. J. 5 pieces.
- 899 Stone Engraving Tool, for ornamenting pottery. Very fine. Adams Co., Ohio.
- 900 Stone Implements. Greene Co., Ohio. 2 pieces
- 901 Stone Weaving Tools. New Jersey. 3 pieces
- 902 Stone Upright Handle, for fire-making drill. Knox Co., Tenn. 4 in. long.
- 903 Fourteen Boxes, containing pieces of Clay Pottery. Pennsylvania, Florida, Delaware, etc.
- 904 Celt. Polished white marble. Florence, Italy. 5 in. long.
- 905 Stone Celts. Lancaster Co., Pa. 4 pieces
- 906 Celt. Black mottled stone. Porto Rico, W. I. 5 1-2 in. long.
- 907 Stone Hide Dressers. Pennsylvania and New Jersey. 2 pieces
- 908 Paint used by the Indians. Pennsylvania. 2 pieces
- 909 Gun Flints. Pennsylvania. 43 pieces
- 910 Copper. Found at site of old Susquehannock Town, Pa. 60 pieces
- 911 Stems of Lead Pipes, etc. Lancaster Co., Pa. 19 pieces.
- 912 Copper Articles. Found at site of old Susquehannock Town, Pa. 8 pieces
- 913 Human Faces. Clay. Lancaster Co., Pa. 2 pieces
- 914 Old Lead Bullets. Found at side of old Susquehannock Town, Pa. 5 pieces.

- 915 Human Head. Cut out of porous stone. Very rare. New Jersey.
- 916 Stone Ornamental Object. Representing a fish. Camden Co., N. J.
- 917 Stone Ornamental Object. Hat-shaped. Gloucester Co., N. J.
- 918 Stone Ornamental Object. Boot-shaped. Adams Co., Ohio.
- 919 Stone Tribal Figure. In form of an animal. Very rare. Santa Barbara, Cal.
- 920 Stone Human Figure. New Jersey. Copper Human Figure, Crawford Co., Wis., and Terra Cotta Human Hand, Mexico. 3 pieces
- 921 Stone Ornamental Figure. Head of a Panther. Pinal Co., Ariz.
- 922 Flakes of Unfinished Implements. Lancaster Co., Pa. 128 pieces
- 923 Stone Scrapers. Ohio and Pennsylvania. 8 pieces
- 924 Stone Scrapers. Lancaster Co., Pa. 14 pieces
- 925 Stone Scrapers. Lancaster Co., Pa. 9 pieces
- 926 Stone Scrapers. Ohio. 6 pieces
- 927 Stone Scrapers. New York, Indiana, Illinois, etc. 8 pieces
- 928 Stone Scrapers. Kentucky and Pennsylvania. 4 pieces
- 929 Stone Scrapers. Lancaster Co., Pa. 9 pieces
- 930 Paleolithic, Chipped Quartz Implements. Lancaster Co., Pa. 24 pieces
- 931 Stone Turtle Backs and Implements of unknown use. Lancaster Co., Pa. 8 pieces
- 932 Chipping Stone or Crude Chisel, Gorget, Banner Stone, etc. Ohio, Pennsylvania and Texas. 8 pieces
- 933 Stone Perforator, Corn Husker, Hide Dresser, etc. Lancaster Co., Pa. 11 pieces
- 934 Stone Drills and Perforators. New York and Pennsylvania. 17 pieces
- 935 Stone Drills and Perforators. Pennsylvania. 28 pieces
- 936 Stone Drills and Perforators. Pennsylvania. 9 pieces
- 937 Stone Drills and Perforators. Pennsylvania and Maryland. 18 pieces
- 938 Stone Drills and Perforators. Pennsylvania. 21 pieces
- 939 Stone Drills and Perforators. Pennsylvania. 21 pieces
- 940 Stone Drills and Perforators. Pennsylvania. 20 pieces
- 941 Stone Drills and Perforators. Pennsylvania. 22 pieces

- 942 Stone Drills and Perforators. Pennsylvania. 22 pieces
- 943 Hammer Stones. Paleolithic. Hillsboro Co., Fla. 14 pieces
- 944 Chipped Scrapers. Hillsboro Co., Fla. 31 pieces
- 945 Adzes, Knives and Hoes. Hillsboro Co., Fla. 34 pieces
- 946 Stone Tomahawks, Hatchets and Skinners. Paleolithic. Hillsboro Co., Fla. 31 pieces
- 947 Axes. Paleolithic. Hillsboro Co., Fla. 11 pieces
- 948 Chipped Stone Implements. Various forms and sizes, made by the Pre-Historic Indians of Florida. 131 pieces
- 949 A similar lot. 128 pieces
- 950 Stone Turtle Backs. Hillsboro Co., Fla. 26 pieces
- 951 Stone Turtle Backs. Hillsboro Co., Fla. 27 pieces
- 952 Parts of Broken Arrow and Spear Heads. Hillsboro Co., Fla. 131 pieces
- 953 Flakes from the Workshops of the pre-historic inhabitants of Florida. 225 pieces
- 954 Paleolithic Chipped Instruments. Hillsboro Co., Fla. 37 pieces
- 955 Paleolithic Chipped Instruments. Hillsboro Co., Fla. 39 pieces
- 956 Parts of Skull with teeth, etc. From a mound in Hillsboro Co., Fla. Lot
-
- 957 Stone Arrow Head. Panama.
- 958 Obsidian Arrow Heads. Mexico. 4 pieces
- 959 Chipped Flint Knives. Randers, Denmark. 3 pieces
- 960 Flint Arrow Heads. Florence, Italy. 2 pieces
- 961 Flint Arrow Heads. Yorkshire, England. 2 pieces
- 962 Arrow and Spear Heads. Fort Erie, Ontario, Canada. 20 pieces
- 963 Knife, Obsidian. Sharp edges. Mexico. 6 in. long.
-
- 964 Shell Beads. "Wampum." From a small plate of horn hangs seven strings of thin shell beads 1-8 of an inch in diameter, mostly white, some dark in groups; at end of one string is an engraved shell pin 5 1-2 in. long, at the end of other strings are discs and shells. The whole including about 3,400 beads. Fine and rare. Cayuga Co., N. Y.
- 965 Bead Work on Buckskin, in form of a turtle. Navajo Indians, New Mexico.

- 966 Two Necklaces of Shell Beads. Navajo Indians, New Mexico. One has center piece with two human figures engraved on it.
- 967 Pair of Moccasins. Dressed skin embroidered with bead work. Unused. Navajo Indians, New Mexico.
- 968 Two pairs of Indian Moccasins. One pair covered with bead work and a cloth purse. Comanche Indians. As a lot.
- 969 Miniature Birch-Bark Canoes. Ojibway Indians.

POTTERY FROM THE MOUND BUILDERS.

- 970 Red Pottery Jar. Round, ornamented with a large human head and scroll. Red glaze. Rare type. Phillips Co., Ark. 6 in high. *See plate.*
- 971 Terra Cotta Pot. Rounded body, 4 1-2 in., with two handles. Bolivar Co., Miss. Diameter 3 1-2 in., 3 1-2 in. high.
- 972 Bowl. Rounded body, 5 in., projecting head and paws of beaver holding a stick. Black glaze. Very fine and perfect. From the Great Mound, Mississippi Co., Mo.
- 973 Large Bowl. Oblong body, 8 1-2 and 7 1-2 in. in diameter; on one side a figure projecting outward in the form of a vulture. Black glaze. Fine and perfect. Mississippi Co., Mo. *See plate.*
- 974 Turtle Effigy Bowl. Brown terra cotta. Rounded body, 6 1-2 in. in diameter, crude projecting head, tail and fin. Very old. Crittenden Co., Ark.
- 975 Jar. Terra cotta. Rounded body, 6 1-2 in. in diameter. Fine and perfect. From a mound on Arkansas River, Ark.
- 976 Jar. Brown terra cotta. Rounded body, 5 in. in diameter, short neck. Fine and perfect. Pecan Point, Mississippi Co., Ark.
- 977 Bottle. Brown terra cotta. Rounded body, 6 5-8 in. in diameter, long neck. 8 in. high. Perfect. Phillips Co., Ark.
- 978 Jar. Black terra cotta. Rounded body, 7 3-4 in. in diameter, straight neck, 6 3-4 in. high. Perfect. Gasconade Co., Mo.
- 979 Bottle, human effigy. The neck of the bottle forms the head with arms in relief on body. Black glaze. Very old and fine piece. Crittenden Co., Ark.
- 980 Pot. Brown terra cotta. Rounded body, 5 in. in diameter, short neck, two handles. Fine and perfect. Bolivar Co., Miss.



No. 1019

No. 1003

No. 1018

- 981 Jar. Black terra cotta. Rounded body, 5 1-4 in. in diameter, short neck, 5 in. high. Fine and perfect. Mississippi Co., Mo.
- 982 Bottle. Brown terra cotta. Low rounded body, long neck, 6 3-4 in. high. Perry Co., Mo.
- 983 Bottle. Brown terra cotta. Rounded body, 4 1-2 in. in diameter, long neck, 4 in. high. Fine and perfect. Hamilton Co., Ohio.
- 984 Bottle. Brown terra cotta. Rounded body, 4 3-4 in. in diameter, long neck with six horn-like projections, opening on side. 6 in. high. Fine and perfect. Perry Co., Mo.
- 985 Pot. Brown terra cotta. Rounded body, 3 5-8 in. in diameter, four crude human faces on upper lip and other ornamentation. 4 in. high. Repaired. Gasconade Co., Mo.
- 986 Bottle. Brown terra cotta. Rounded body, 6 in. in diameter, neck with six horn-like projections, opening in side. 7 in. high. Mississippi Co., Miss.
- 987 Jar. Brown terra cotta. Rounded body, 6 3-4 in. in diameter, straight neck, 6 1-4 in. high. Perfect. Mississippi Co., Ark.
- 988 Pot. Black terra cotta. Rounded body, 5 1-4 in. in diameter, crude form. 4 1-2 in. high. Fine. From a mound on Arkansas River, Ark.
- 989 Effigy Figure, human head with face upturned. Brown terra cotta, 5 3-4 in. high. Rare specimen. Hamilton Co., Ohio.
- 990 Bottle. Black terra cotta. Rounded body, 6 1-4 in. in diameter, long neck, 7 3-4 in. high. St. Francis River, Ark.
- 991 Bowl. Black terra cotta. Rounded body, 5 1-4 in. in diameter, spout-shaped projection extending on side. Very fine and rare. Hamilton Co., Ohio.
- 992 Tea Pot with Strainer. Red terra cotta. With horn-shaped spout. Red glaze decoration. 6 in. in diameter, 4 1-2 in. high. Very rare and fine. Bolivar Co., Miss.
- 993 Pot. Brown terra cotta. Ornamented with a projecting figure of a frog. 3 1-4 in. high. Perfect. Bolivar Co., Miss.

POTTERY FROM NEW MEXICO.

- 994 Bottle. Keresan Pueblo. Pear-shaped body, 6 in. in diameter, with handle, black decoration. Fine and perfect. From near Santa Fe.

- 995 Bottle. Keresan Pueblo. Rounded body, 7 in. in diameter, surmounted with an animal head, projecting ears and eyes, black decoration on cream-colored background. 8 in. high. Very fine. Neatly repaired. Valencia Co.
- 996 Saucer. Pueblo. 4 1-2 in. in diameter. Black decoration on white background. Perfect. Valencia Co.
- 997 Saucer. Ornamental terra cotta. 5 in. in diameter. Valencia Co.
- 998 Pot. Terra cotta. 4 1-2 in. in diameter. Red glaze, ornamented with squared human face. 4 1-2 in high. Damaged. Pandones, Mexico.

POTTERY FROM LIBERIA, AFRICA.

- 999 Cooking Pot, with cover. Rounded body, 7 1-2 in. in diameter, covered with ornamentation made by an impression from a coarse woven fabric, black glaze. Perfect, rare and fine.
- 1000 Cooking Pot, with cover, flattened spherical body, 10 1-2 in. in diameter, covered with ornamentation made by an impression from a coarse woven fabric, black glaze. 8 3-4 in. high. Very rare and fine.
- 1001 Cooking Pot. Rounded body, 8 1-4 in. in diameter, entirely covered with an ornamentation made by an impression from a coarse woven fabric, black glaze. 7 in. high. Fine and rare.

IDOLS FROM MEXICO.

- 1002 Aztec Stone Idol, the Goddess of Water bearing on head an ornamented bowl; legs repaired. 14 in. high. Very old and rare.
- 1003 Aztec Idol, prehistoric lava-stone, "Tlaloc" God of Rain. A sitting figure, hands resting on knees. 14 1-4 in. high. From a mound near Durango, Mexico. Very fine and rare. *See plate.*
- 1004 Stone Idol. Squatting human figure. 8 1-2 in. high. Fine and rare. From Aztec, Mexico.
- 1005 Idol, lava stone. Squatting human figure with features strongly marked. 8 1-4 in. high. Fine and rare. Aztec, Mexico.

- 1006 Stone Idol, in form of a human head. 9 in. high. Aztec Mexico.
- 1007 Stone Idol. Human figure. 4 1-4 in. high. Aztec, Mexico.
- 1008 Maya Idol. Red clay, standing human figure, painted ornamentation, 11 1-4 in. high. Repaired, but very fine and rare. Yucatan, Mexico.
- 1009 Aztec Idol. Red terra cotta, grotesque human figure, 13 1-4 in. high. Slightly damaged but very fine. *See plate.*
- 1010 Idol, in form of an animal with human head. Red terra cotta. 7 1-2 in. long, 6 1-2 in. high. Very rare. Maya, Guatemala.
- 1011 Idol Head. White stone. "Sun God." Clear-cut features. 6 in. high. Fine and rare. Aztec, Mexico.
- 1012 Idol. Lava stone. Human head. 5 in. high. Aztec, Mexico.
- 1013 Idol. Female figure. Red terra cotta. Cup held in hands. Unique specimen. 9 1-2 in. high. Aztec, Mexico. *See plate.*
- 1014 Idol. Standing female figure, naked. "Plainly marked as a female." Terra cotta. 10 1-2 in. high. Very rare and perfect specimen. Aztec, Mexico.
- 1015 Idol. Human head, clear-cut features. Polished green jade. 5 in. wide, 3 1-4 in. high. Very rare and fine. Early Aztec, Mexico.
- 1016 Human Figure. Hollow, grotesque head with large open mouth. Gray terra cotta. Perfect, rare and fine. 6 1-2 in. high. Aztec, Mexico.
- 1017 Bottle. In form of a human figure, ornamented. 8 1-4 in. high. Red terra cotta, glazed. Unique and rare specimen. Maya, Guatemala.
- 1018 Male Figure. Nude in a sitting position, elbows resting on knees. Red terra cotta, glazed. 8 1-2 in. high. Rare and fine. Mexico. *See plate.*
- 1019 Male Figure. Nude, sitting, elbows resting on knees. 9 in. high. Red terra cotta, glazed. Unique piece. Mexico. *See plate.*
- 1020 Animal Head. Probably that of a Buffalo. Lava stone. Aztec, Mexico.
- 1021 Metate, Aztec. "Letlatl," for grinding grain, five-sided Lava stone. 9 in. long. Rare form. Aztec, Mexico.

- 1022 Metate. For grinding grain. Resting on four feet. Hard polished stone. 10 in. long, 4 in. wide. Fine and perfect. Aztec, Mexico.
- 1023 Handled Pestle. For grinding paint. Lava stone. Perfect and rare. Aztec, Mexico.
- 1024 Paint-Cup or Bowl. Scalloped edges. Lava stone. Fine and rare. Aztec, Mexico.
- 1025 Idol. Grotesque human figure. Polished dark green jade. 5 3-4 in. high. Repaired, but fine and rare. Mexico.
- 1026 Idol. Grotesque human figure. Polished black stone. 4 in. high. Rare specimen. Mexico.
- 1027 Black, Glazed, Terra Cotta Baby Shoe. 4 1-2 in. long. Modern Navajo, N. Mex.
- 1028 Terra Cotta Paint-Cups. From the Mound-Builders, Arkansas. 3 pieces

ANCIENT PERUVIAN POTTERY.

- 1029 Funeral Vase. Black glaze. Round body, with neck forming a human head, handle at back. 9 3-4 in. high. Rare and perfect. *See plate.*
- 1030 Bottle. Basket-shaped. Monkey on handle. Black glaze. 7 1-2 in. high. *See plate.*
- 1031 Funeral Vase of a King. Large, high neck, crowned human face in relief, black ornamentation. Repaired. 15 in. high. One of the best ancient types of Peruvian pottery; found in the tomb of a King. *See plate.*
- 1032 Funeral Vase of a King. Oval body, high neck with crowned human face in relief, white and black decoration. 17 3-4 in. high. Slightly imperfect. Very old. *See plate.*
- 1033 Funeral Vase of a King. Oval body, high neck with crowned human face. 13 1-2 in. high. Fine specimen.
- 1034 Funeral Vase of a King. Oval body, high neck forming a crowned human head. Black glaze. 15 in. high. Fine.
- 1035 Funeral Vase of a King. Oval body, high neck forming human face. Portion of neck missing. 16 1-4 in. high.
- 1036 Funeral Vase of a King. Oval body, high neck, with crowned human face. Light terra cotta. 14 in. high.
- 1037 Jar or Diota. Oval body, neck decorated with penguin's heads and legs in relief, two handled, red and white glaze, decorated. 21 in. high. Very rare piece.

- 1038 Jar or Diota. Black and white glaze. 17 in. high. Damaged, but fine.
- 1039 Jar or Diota. Oval body, two handles at neck, decorated in brown and white. Repaired. 14 1-2 in. high.
- 1040 Jar. Oval body, two handles at neck, decorated with bat heads in relief. Black glaze. 14 1-2 in. high. Very old.
- 1041 Jar. Oval, large bowl, two handles, puma figure in relief. Rare form. 13 1-4 in. high.
- 1042 Jar or Diota. Large oval body, one handle missing, small serpent in relief on side, black glaze on white ground. Fine and rare. 16 in. high.
- 1043 Jar. Oval, bowl-shaped neck, ornaments in relief. White terra cotta. 14 in. high. Fine and rare.
- 1044 Jar or Diota. Oval body, flaring neck with two handles, black glaze. 12 in. high. Fine and perfect.
- 1045 Jar or Diota. Oval body, flaring neck with two handles, black and white decorations. Fine and perfect. 12 1-4 in. high.
- 1046 Jar or Diota. Oval body, two animals in high relief at handles and at neck, which is damaged. Fine. 12 3-4 in. high.
- 1047 Jar. In shape of a flattened sphere, with handle and human head in relief, white terra cotta, black decoration. Fine and perfect. 10 1-2 in. high.
- 1048 Vase. Oval body, decorated with curious animals in relief, two handles, black and white decorations. 11 1-4 in. high.
- 1049 Jar. Flat oval shape, flaring neck, white terra cotta, chipped at neck. Fine. 12 1-2 in. high.
- 1050 Jar or Diota. Bowl-shaped neck, two handles, white and red decorations. Perfect. 12 in. high.
- 1051 Vase. Curious shape, handle at neck, black glaze. Rare form. 10 in. high.
- 1052 Jar. Rounded body, high neck, two handles, red and black decorations. 10 1-2 in. high.
- 1053 Funeral Vase. Oval body, neck forming a human head, handle. Very old and fine. 12 in. high.
- 1054 Vase. Rounded body, long neck, brown glaze, human head in relief. Very old. 10 3-4 in. high.
- 1055 Vase. Rounded body, high neck, one handle missing, red glaze. 10 1-4 in. high.

- 1056 Cooking Pot. Oval body, black terra cotta. Repaired. 10 in. high.
- 1057 Jar. Globe-shaped, high neck, human face in relief, two handles. Fine piece. 12 in. high.
- 1058 Funeral Jar. Rounded body, high neck with human face in relief, three handles, one missing, red glaze. 10 in. high.
- 1059 Jar. Globular body, two handles, light terra cotta. Rare specimen. 12 1-2 in. high.
- 1060 Guanaco Vase. Large fine head of a guanaco projecting from one end, white terra cotta, black decorations. Unique specimen. 7 1-2 in. high. Repaired.
- 1061 Jar. Oval body, red glaze. Old specimen. 12 in. high. Repaired.
- 1062 Jar or Diota. Globular body. 11 in. high.
- 1063 Vase. Fruit-shaped body, two handles, black glaze. Very rare and fine. 9 1-2 in. high.
- 1064 Cooking Pot. Round body, terra cotta. Perfect and rare. 10 in. high.
- 1065 Vase. Globular body, handles at neck. Good specimen. 9 in. high.
- 1066 Vase. Spherical body, black glaze. 7 in. high.
- 1067 Jar or Diodat. Oval body, black and white decoration. Neck chipped. 9 1-2 in. high.
- 1068 Vase. Globular body, with panels of birds in high relief. Very fine and perfect. 7 1-2 in. high.
- 1069 Vase. Rounded body, two handles, black glaze. Fine specimen. 8 in. high.
- 1070 Water Croft. Small handle, flattened sides, on one of which is a human figure in relief, black glaze. Fine specimen. 10 in. high.
- 1071 Vase. Rounded body, two handles, red terra cotta. 7 1-2 in. high.
- 1072 Vase. Spherical body, two handles, black and white decoration. 7 1-2 in. high.
- 1073 Fruit Vase. Rounded body, two handles, black glaze. Fine and rare. 7 1-2 in. high.
- 1074 Vase or Urn. One handle, black lustrous glaze. Very fine. 7 1-2 in. high.
- 1075 Bottle. Spherical body with handle, black glaze. Very fine and perfect. 9 in. high.

- 1076 Vase. Acorn-shaped body, two handles, white terra cotta, brown decorations. 6 1-2 in. high.
- 1077 Vase. Globular body, long neck with human face in relief, red and black ornamentation. Rare specimen. 7 in. high.
- 1078 Vase. Globular body, two handles, black decorations. Perfect. 6 1-2 in. high.
- 1079 Vase. Penguin form, with handle, black and white decoration. Unique form. 12 3-4 in. high.
- 1080 Vase. Rounded body, two handles, black and white decoration. 9 1-4 in. high.
- 1081 Vase. Oval body, two handles. Fine specimen. 8 1-2 in. high.
- 1082 Water Croft. Globular, two small handles, black glaze. 8 3-4 in. high.
- 1083 Vase. Rounded body, two handles, black glaze. Fine specimen. 8 in. high.
- 1084 Vase. Rounded body, two handles, red glaze. 8 1-2 in. high.
- 1085 Vase. Fish-shaped, black and white decoration. Rare form. 6 3-4 in. high.
- 1086 Jar. Rounded body, two handles, black glaze. Rare form. 8 1-4 in. high.
- 1087 Vase. Rounded body, two handles, brown and white decoration. Very fine. 6 in. high.
- 1088 Vase. Round, flattened sides, two handles, black and white decorations. 6 3-4 in. high.
- 1089 Vase. Rounded body, animal head in relief, black glaze. 7 in. high.
- 1090 Water Croft. Round, flattened body, brown and white decorations. Very fine. 9 3-4 in. high.
- 1091 Vase. Globular body, two handles, black terra cotta. Very fine. 7 1-2 in. high.
- 1092 Cooking Pot. Rounded body, black terra cotta. Rare form. 6 in. high.
- 1093 Vase. Globular body, two handles, red terra cotta. Very fine. 7 3-4 in. high.
- 1094 Vase. Oval body, two handles, brown and white decorations. Fine specimen. 9 1-2 in. high.
- 1095 Vase. Rounded body, one handle missing. Yellow glaze. 7 1-4 in. high.

- 1096 Jar. Cylindrical body, one handle, ornaments in relief. Rare form. 8 1-4 in. high.
- 1097 Vase. Globular body, black decoration. 7 1-2 in. high.
- 1098 Cooking Pot. Rounded body, black glaze. 5 1-4 in. high.
- 1099 Cooking Pot. Rounded body, black glaze. 6 in. high.
- 1100 Vase. One handle, black glaze. Fine specimen. 6 in. high.
- 1101 Vase. Round body, on three feet, open work, brown glaze. Rare form. 3 1-4 in. high.
- 1102 Vase. Round body, black decoration. 5 1-2 in. high.
- 1103 Vase. Rounded body, one handle, black and white decorations. Repaired. 6 1-4 in. high.
- 1104 Vase. Globular body, two handles, red and white decorations. Chipped at neck. 6 3-4 in. high.
- 1105 Vase. Oval body, two handles, white decoration. 9 1-2 in. high.
- 1106 Jar. Globular body, one handle, red and black glaze. 8 1-4 in. high.
- 1107 Vase. Two handles, yellow and brown decorations. Rare form. 9 1-2 in. high.
- 1108 Vase. Rounded body, two handles, brown and white decorations. Ornaments in relief. Rare form. 4 3-4 in. high.
- 1109 Water Croft. Rounded body, one handle missing and chipped at neck. 7 in. high.
- 1110 Bowl. Brown terra cotta. Diameter 8 in.
- 1111 Saucer. From Lancaster Co., Pa. Extremely rare. Red terra cotta. Diameter 5 1-2 in.
- 1112 to 1149 Rare specimens of Peruvian Pattery, all shapes and forms, all named and localities given. Each lot will be sold separately and the particulars given at time of sale.
- 1150 Calabash Bottle. Peru.
- 1151 Calabash Bowl. Peru. With mummified hand, bones, etc.
- 1152 Calabash Bowl. Peru. With slungshot, etc.
- 1153 Terra Cotta Bowl and contents. Peru.
- 1154 Calabash Bowl. Peru. With dried coral plants.
- 1155 Calabash Bowl. Peru. With shells.
- 1156 Five Calabash Bowls. Various sizes. Peru.
- 1157 Five Calabash Bowls. Various sizes. Peru.

- 1158 Five Calabash Bowls. Various sizes. Peru.
- 1159 Calabash Snuff Bottle, with stick. Peru. 4 3-4 in. high.
- 1160 Calabash Snuff Bottle, with dipping stick. Peru.
- 1161 Calabash Snuff Bottle, with dipping stick. Peru. 5 in. high.
- 1162 Calabash Snuff Bottle, with dipping stick. Peru. 6 1-4 in. high.
- 1163 Calabash Snuff Bottle, with tan hide attachment. Peru. 5 1-2 in. high.
- 1164 Mummied Hand and Foot. Peru.
- 1165 Ten pieces of thin sheet silver. Peru.
- 1166 Beads, etc. Peru. Lot
- 1167 Lot of small shells, lucky foot of Guanaco, etc. Lot
- 1168 Terra Cotta Animal Toy, Guanaco. Peru.
- 1169 Terra Cotta Ornament, Human Figure. Peru. Very curious.
- 1170 Terra Cotta Ornament, Human Figure. Peru. Very curious.
- 1171 Terra Cotta Ornament, Female Figure. Peru. Very curious
- 1172 Terra Cotta Figure. Peru. Very curious.
- 1173 Terra Cotta Ornament, Human Figure. Peru. Fine. Lacks one leg.
- 1174 Terra Cotta Ornament. Human Figure. Peru. Rare and very old. Imperfect.
- 1175 Terra Cotta Ornament. Human Figure. Peru. Perfect and very old.
- 1176 Terra Cotta Ornament. Human Figure. Peru. Curious and very old.
- 1177 Terra Cotta Ornament. Human Figure. Peru. Very fine and old.
- 1178 Calabash Bowl, etc. Peru. 8 pieces
- 1179 Calabash Bowls and contents. Peru. 6 pieces
- 1180 Animal Toys. Terra Cotta. Pig seated and Pig standing. Peru. Very curious.
- 1181 Three Terra Cotta Bowls and one Saucer. Peru. 4 pieces
- 1182 Two Terra Cotta Bowls, one Cup and one Saucer. Peru. 4 pieces

- 1183 Two Terra Cotta Bowls, one Cup and one Saucer. Peru. 4 pieces
 1184 Two Terra Cotta Bowls and one Saucer. Peru. 3 pieces
 1185 Three Terra Cotta Bowls and one Saucer. Peru. 4 pieces
 1186 Three Terra Cotta Bowls and one Saucer. Peru. 4 pieces
 1187 Three Terra Cotta Bowls. Peru.

WAR CLUBS, BOWS, ARROWS, IMPLEMENTS, ETC.

- 1188 Indian Stone Implements. 5 pieces
 1189 Halibut Hook, with iron barb. Makah Indians, Washington.
 1190 Birch-Bark Basket and two Boxes. Micmac Indians, Nova Scotia.
 1191 Indian Horn Dipper. Dakotah Indians.
 1192 Indian Horn Dipper. Dakotah Indians.
 1193 Spoon, Black Buffalo Horn. Dakotah Indians.
 1194 Spoon, Black Buffalo Horn. Dakotah Indians.
 1195 Bow. 6 ft. 8 in. long. Amazon River, South America.
 1196 Bow. 5 ft. 1 in. long. Cape Flattery, Washington.
 1197 Wooden Spear, probably a ceremonial piece. Odd shape. Alaska.
 1198 Nine Arrows. Cane shafts with long notched wooden points; from 1 ft. 3 in. to 5 ft. 9 in. Amazon River, South America.
 1199 War Club. Hard wood, polished handle, sawtooth design, large acorn end. Fiji Islands.
 1200 War Club. Hard wood, polished handle, large head with spiked points. Fiji Islands.
 1201 War Club. Finely engraved handle, large ball on end. Fiji Islands.
 1202 Chief's War Club. Hard polished wood, neatly engraved, inlaid, 24 1-2 in. long. Tonga Islands, Oceanica.
 1203 War Club. Engraved sawtooth design. 29 in. long. Tonga Islands, Oceanica.
 1204 War Club. Elaborately engraved, hard polished wood, 24 in. long. Tonga Islands, Oceanica.
 1205 Chief's War Club. Finely engraved with sawtooth and straight line ornamentation, hard wood, 43 1-2 in. long. Tonga Islands, Oceanica.

- 1206 War Club. Oar-shaped, hard black wood, 33 in. long. Peru.
- 1207 Swordfish Horn. 39 in. long. Used as a weapon in Yucatan, Mexico.
- 1208 Throwing Clubs and other wooden implements. From 15 to 40 in. long. Peru. 11 pieces
- 1209 Weaving Tools. Hard wood pins and bamboo pointed at both ends, many wrapped with thread, some with painted decorations. 7 in. to 23 in. long. Peru. 40 pieces
- 1210 Similar lot. 7 in. to 21 in. long. Peru. 40 pieces
- 1211 Similar lot. 5 in. to 24 in. long. 25 pieces
- 1212 Similar lot. 6 in. to 19 in. long. 25 pieces
- 1213 Similar lot. 6 in. to 18 in. long. 35 pieces
- 1214 Similar lot. 5 in. to 14 in. long. 25 pieces
- 1215 Stone Pipe. Red Catlinite otter. 3 in. long, stands above stem; length of whole pipe 5 in.
- 1216 Wooden stem for calumet pipe, flat, 2 in. wide at one end, ornamented with bunches of coarse hair and with a wrapping of plaited grass; belonged to Chief Waa-Na-Taa. Red River Country, British America. 39 in. long.
- 1217 Large Stone Mortar. Found in solid rock near Cocalico Creek, Lancaster Co., Pa. 15 in. x 15 in. x 8 in. high. Cup in center. Weight 110 pounds.
- 1218 Reed Matting or Cloaks. Peru. 2 pieces
- 1219 Scarf and an Apron of coarse material. Peru. 2 pieces
- 1220 Pouches. Guanaco and Cotton. Various patterns. Peru. 9 pieces
- 1221 Indian Head Dress Cape and Skirt, made of dressed hide elaborately ornamented. Modern Mexico. 3 pieces
- 1222 Guanaco and Cotton Cloth, in the form of shirts, veil, etc. Peru. 27 pieces
- 1223 Guanaco Cloth, various patterns and colors. Large pieces. Peru. 8 pieces
- 1224 Guanaco and Cotton Cloth. Peru. 3 pieces
- 1225 Cloth. Various patterns. Peru. 5 pieces
- 1226 Cloth. Head ornament. Peru.
- 1227 Cloth. Fancy designs. Peru. 5 pieces
- 1228 Cloth. Rich pattern. Peru.

- 1229 Cloth. Fragments. Various patterns. Peru. 4 pieces
 1230 Quiver, made of entire skin of animal. From Wyoming.

INDIAN SCALP

- 1231 Indian Scalp, coarse black curling hair, from Utah.
 1232 Indian Bow, wrapped with rawhide. 29 in. long. From Georgia.
 1233 Bird Skin. Probably Eagle.

MEXICAN TERRA COTTA ORNAMENTS, ETC.

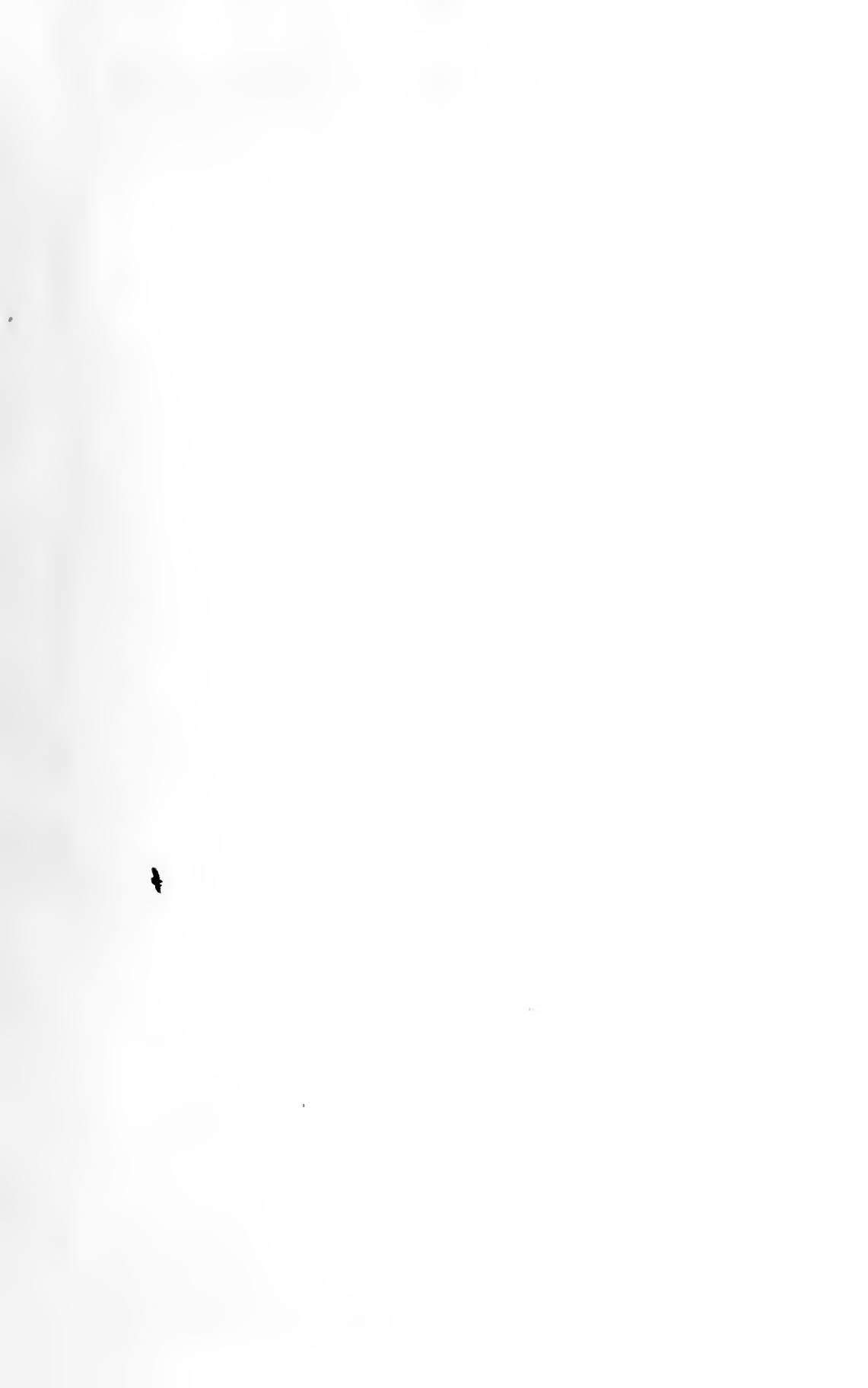
- 1234 Incense Bowls. Double cups, some ornamented with grotesque designs. Used by the Aztecs for burning copal gum, as incense to their Gods. 8 pieces
 1235 Stone Beads, green and gray jade. Very rare. Aztec, Mexico. 3 pieces
 1236 Human Figure. Green and gray stone. Very rare. Aztec, Mexico.
 1237 Human Figure. Gray and black mottled stone. Fine and very rare. Aztec, Mexico.
 1238 Ear Ornaments. Obsidian, hat shaped. Fine and rare. Aztec, Mexico. 3 pieces
 1239 Human Head. Green jade, well formed features. Fine and very rare. Aztec, Mexico.
 1240 Human Head. Green jade, fine engraved features. Very rare. Aztec, Mexico.
 1241 Very small stone carvings, two Human Figures. Rare. Aztec, Mexico.
 1242 Terra Cotta Human Figures. One plainly marked as a female. Aztec, Mexico. 2 pieces
 1243 Terra Cotta Figures. One plainly marked as a female. Aztec, Mexico. 3 pieces
 1244 Terra Cotta Figures. One plainly marked as a female. Aztec, Mexico. 2 pieces.
 1245 Terra Cotta Female Figures. Aztec, Mexico. 2 pieces
 1246 Terra Cotta Beads, probably used as money. Aztec, Mexico. 19 pieces
 1247 Terra Cotta Male Head, probably broken from a bowl. Aztec, Mexico.

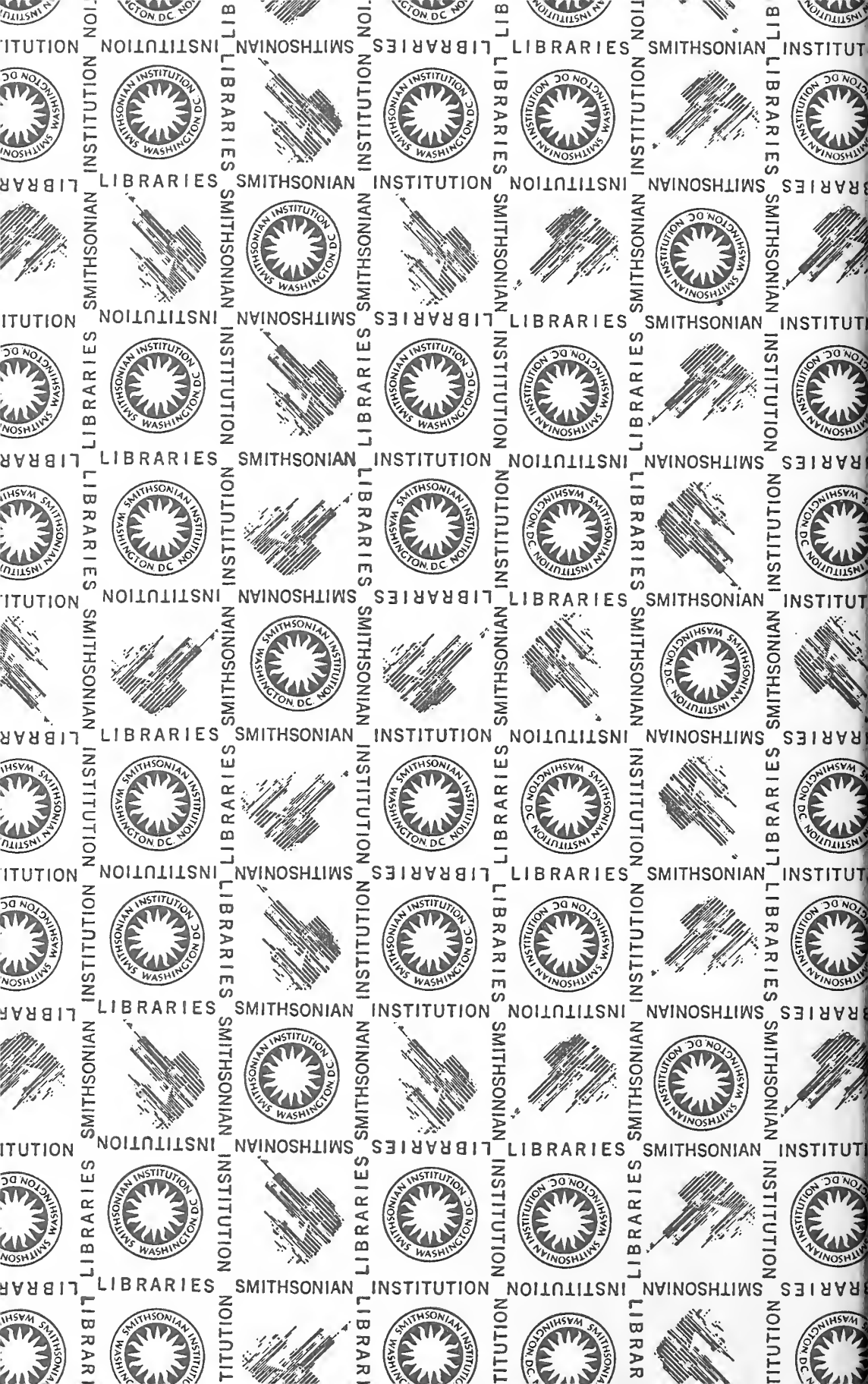
- 1248 Terra Cotta Portrait Heads, formerly attached to perishable bodies. Aztec, Mexico. 12 pieces
- 1249 Terra Cotta Portrait Head. Aztec, Mexico.
- 1250 Terra Cotta Portrait Heads. Formerly attached to perishable bodies. Aztec, Mexico. 9 pieces
- 1251 Terra Cotta Portrait Heads. Formerly attached to perishable bodies. Aztec, Mexico. 4 pieces
- 1252 Terra Cotta Portrait Heads. Formerly attached to perishable bodies. Aztec, Mexico. 8 pieces
- 1253 Terra Cotta Portrait Heads. Formerly attached to perishable bodies. Aztec, Mexico. 3 pieces
- 1254 Terra Cotta Portrait Heads. Formerly attached to perishable bodies. Aztec, Mexico. 9 pieces
- 1255 Terra Cotta Portrait Heads. Formerly attached to perishable bodies. Aztec, Mexico. 4 pieces
- 1256 Terra Cotta Portrait Heads. Formerly attached to perishable bodies. Aztec, Mexico. 4 pieces
- 1257 Terra Cotta Portrait Heads. Formerly attached to perishable bodies. Aztec, Mexico. 9 pieces
- 1258 to 1262 Terra Cotta Portrait Heads. Formerly attached to perishable bodies. Aztec, Mexico. Each lot containing 9 pieces.
- 1263 to 1275 Terra Cotta Portrait Heads. Formerly attached to perishable bodies. Aztec, Mexico. Each lot containing 4 pieces.
- 1276 Ditto. 5 pieces
- 1277 to 1279 Ditto. Each lot containing 3 pieces.
- 1280 Terra Cotta Toy. Baby carrying basket. Aztec Mexico.
- 1281 Two Terra Cotta Bowls. Mexico.
- 1282 Terra Cotta Ornaments. Mexico. 2 pieces
- 1283 Stone and Terra Cotta Ear Ornaments. Mexico. 5 pieces
- 1284 Terra Cotta Figures, Idols, etc. Aztec, Mexico. 7 pieces
- 1285 Obsidian Arrow Heads. Mexico. 6 pieces
- 1286 Animal Stone Figure. Mexico.
- 1287 Terra Cotta Idol Heads. Aztec, Mexico.
- 1288 Terra Cotta Human Figures. Aztec, Mexico. 2 pieces
- 1289 Terra Cotta parts of Human Figures. Aztec, Mexico. 4 pieces
- 1290 Terra Cotta Idol Head. God of Rain. Aztec, Mexico.

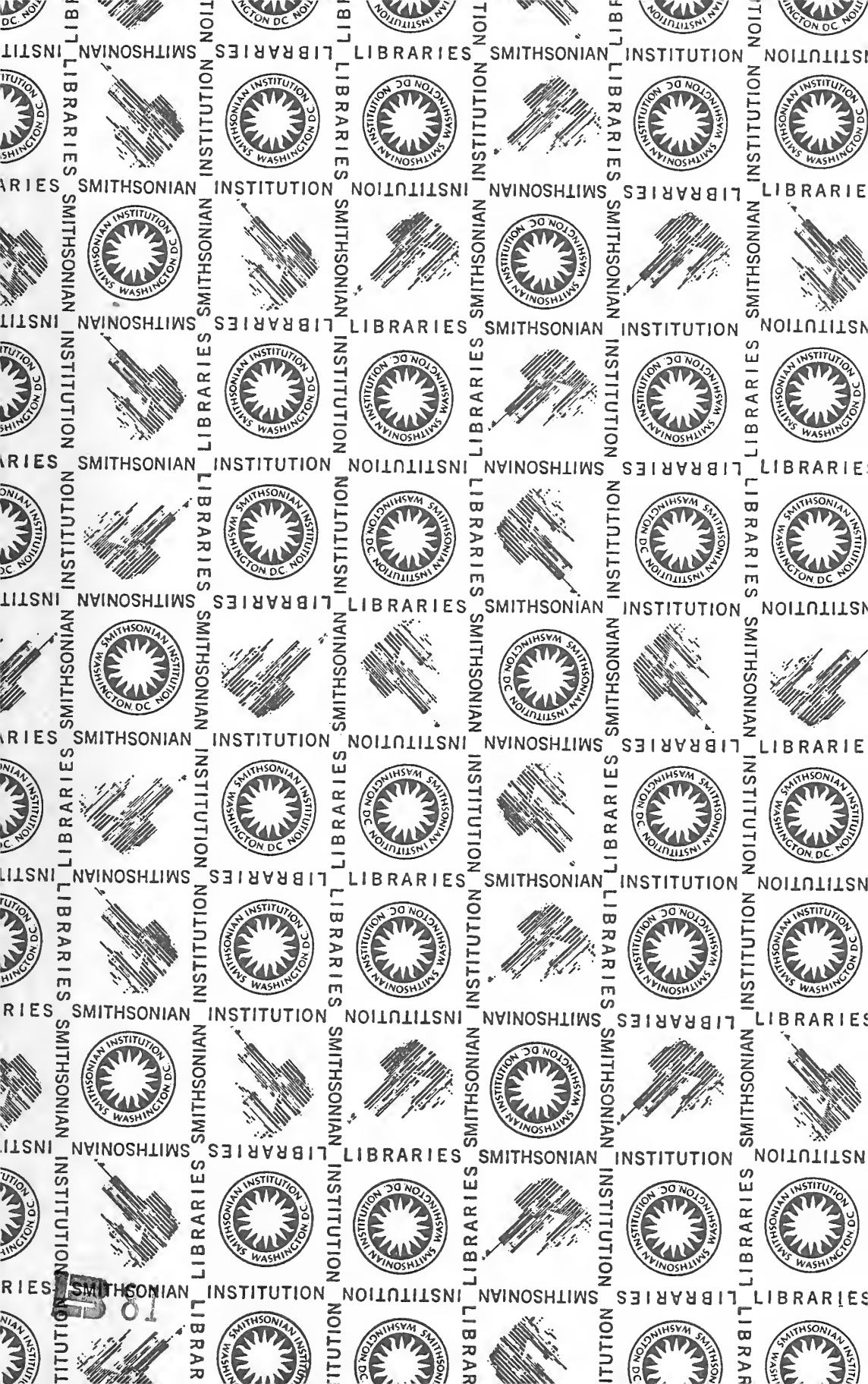
- 1291 Terra Cotta Pendant Charms. Scarab and Alligator Head. Aztec, Mexico. 2 pieces
- 1292 Terra Cotta Animal Heads. Aztec, Mexico. 2 pieces
- 1293 Terra Cotta Human Head. Early Aztec, Mexico.
- 1294 to 1298 Terra Cotta Animal Heads. Aztec, Mexico. Each lot containing 3 pieces.
- 1299 Crow Buckskin Beaded Coat, known to be at least ninety years old.
- 1300 Kiowa Buckskin Beaded Vest.
- 1301 Cheyenne Tobacco Pouch.
- 1302 Caddo Bag, beaded on cloth.
- 1303 Navijo Pottery Water Carrier. Black glaze. Large.
- 1304 Navijo Pottery Water Carrier. Brown glaze. Small.
- 1305 Navijo Pottery Water Carrier. Black glaze. Small.
- 1306 Navijo Pottery Bottle. Black glaze. Small.
- 1307 Navijo Pottery Double Bowl. With handle. Black glaze. Large.
- 1308 Navijo Pottery Double Bowl. With handle. Black glaze. Small.
- 1309 Navijo Pottery Flat Jar. With elaborate decoration in red and black on white background.
- 1310 Navijo Pottery Bowl. With elaborate decoration in red and black on white background.
- 1311 Navijo Pottery Jar. Brown and white decoration on white background.
- 1312 Navijo Woven Grass Basket.
- 1313 Navijo Straw Bottle.
- 1314 Navijo Pottery Vase. Beautifully decorated. Small.
- 1315 Navijo Straw Dishes. Various sizes. 4 pieces
- 1316 Navijo Straw Dishes. 2 pieces
- 1317 Navijo Straw Bowl.











SMITHSONIAN INSTITUTION LIBRARIES



3 9088 00875 9862